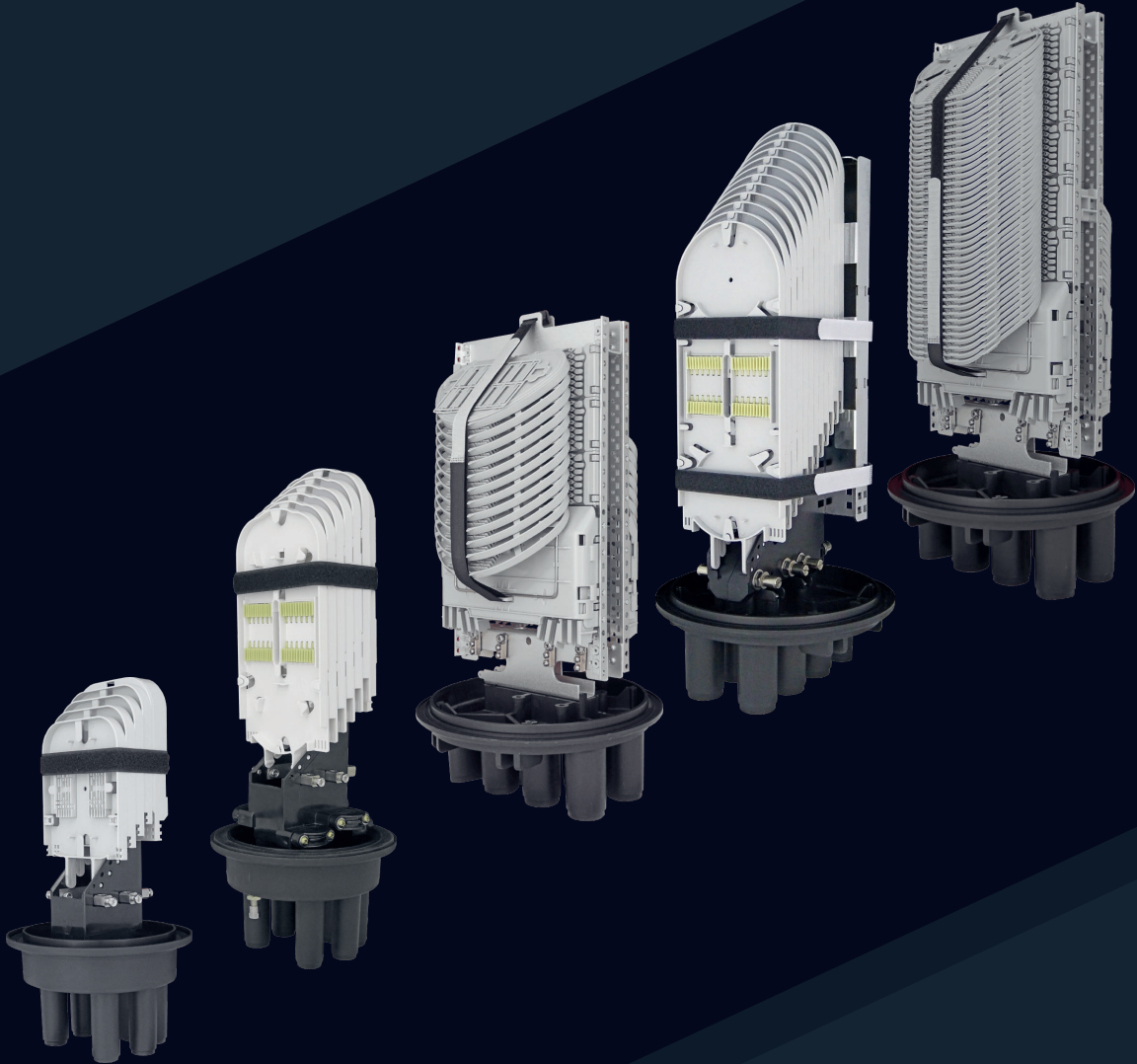




FIBER OPTIC  
ENCLOSURES



HEAT SHRINK  
DOME ENCLOSURES



Founded in 2003, SAMM Technology offers cutting-edge products and services in the fields of telecommunication infrastructure and data center by producing in line with the expectations and needs of its customers.

With more than 20 years of experience, SAMM Technology has become one of the important suppliers of Europe in terms of capacity, technology and innovation by continuously investing in production, technology, R&D and people.

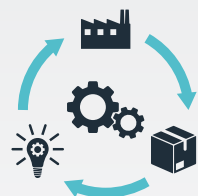
SAMM Teknoloji produces high performance fiber optic cables, fiber optic cable assemblies, data center infrastructure products and structured cabling solutions in its two factories located in the Gosb/Gebze industrial zone.

SAMM also has a ministry-approved research and development center since 2017.



### 20+ Years' Experience

With more than 200 employees and 2 factories, we have achieved several significant projects in telecommunication fiber optic infrastructure.



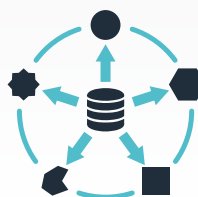
### World Class Production

With systematic and scientific methods, we always focus on reaching the highest quality in our fiber optic cable production and assembly lines.



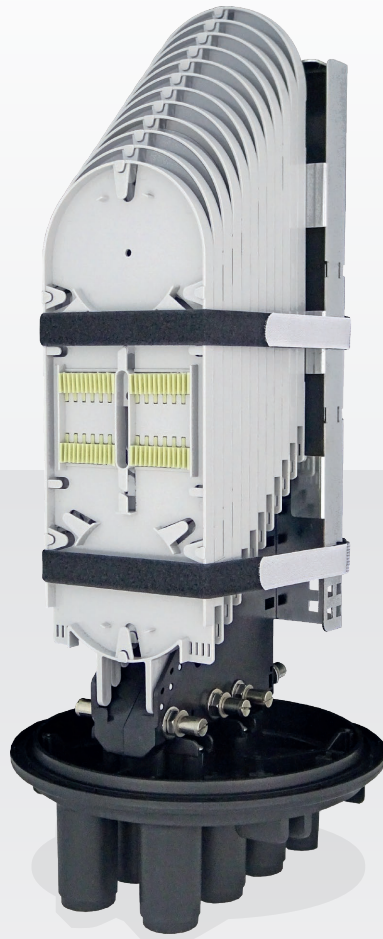
### Connecting Continents

An advantageous shipping location, at the intersection of Asia, Europe and the Middle-East.



### Innovative Solutions

We are passionate about responding to customer demand and keeping pace with the ever-evolving telecommunication and fiber optic technologies.



# HEAT SHRINK DOME ENCLOSURES

48F Fiber Optic Splice Closures

4 Trays, 4x12 Fibers

Features

- May be used for cut, uncut and taut sheath applications.
- May be used for all fiber optic cable.
- Sheath retention & central strength member fasten system included.
- Closure construction and lightweight plastic provides strength and resistance to chemical and U.V attack
- Installation and reentry with a minimum of tools
- All hardware is included
- Protection class: IP68
- RoHS compliance

Application

Underground, Aerial, Vault, Pole Mounting and Wall Mountable



Specifications

Model No.	YT00960   SSC-290140-3P-48-4T/4T-T209A 290x140mm, 48 Fibers Capacity, 4 Trays, 3 Port, Enclosure , w/o Mounting Kits
Spliced Fiber Storage Capacity	48 splices (4x12)
Size   Height x Diameter	290mm x 140mm (w/o clamp), 290mm x 180mm (w clamp)
Cable Ports	1 oval port (20mm), 3 round ports (15mm)



# 96F Fiber Optic Splice Closures

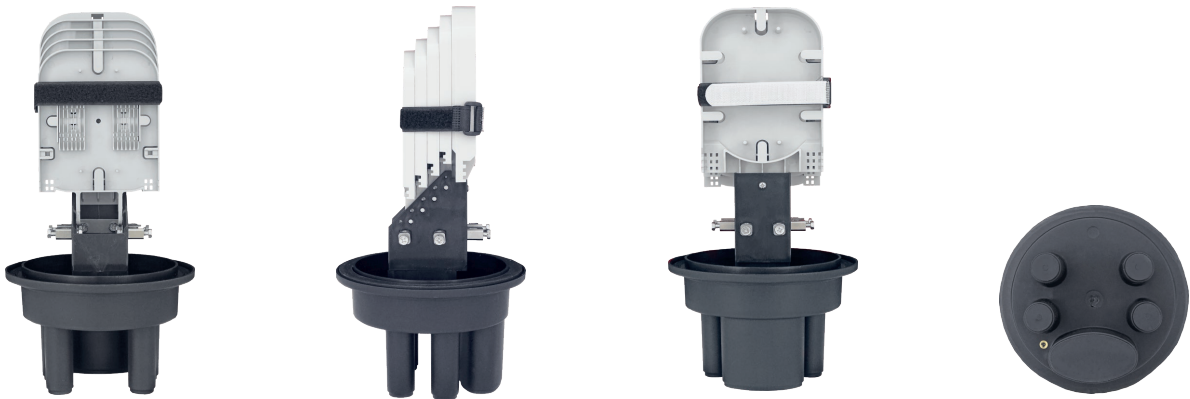
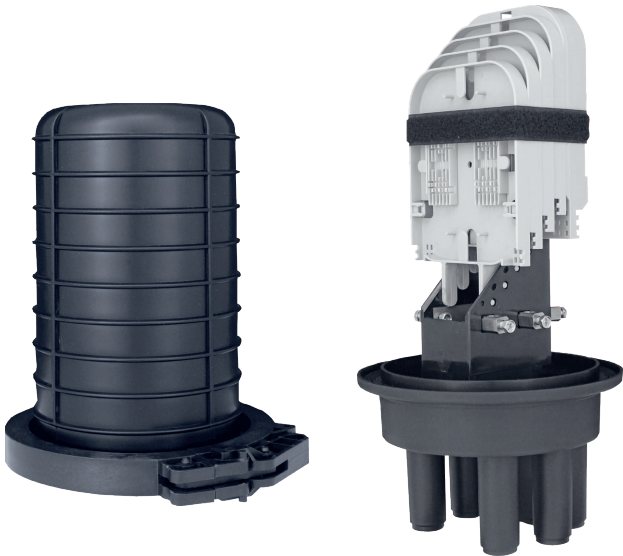
4 Trays, 4x24 Fibers

## Features

- May be used for cut, uncut and taut sheath applications.
- May be used for all fiber optic cable.
- Sheath retention & central strength member fasten system included.
- Closure construction and lightweight plastic provides strength and resistance to chemical and U.V attack
- Installation and reentry with a minimum of tools
- All hardware are included
- Protection class: IP68
- RoHS compliance

## Application

Underground, Aerial, Vault, Pole Mounting and Wall Mountable



## Specifications

Model No.	YT00961   SSC-345175-4P-96-4T/4T-T059A
	345x175mm, 96 Fibers Capacity, 4 Trays, 4 Port, Enclosure , w/o Mounting Kits
Spliced Fiber Storage Capacity	96 splices (4x24)
Size   Height x Diameter	345mm x 175mm (w/o clamp), 345mm x 230mm (w/ clamp)
Cable Ports	1 oval port (24mm), 4 round ports (17.5mm)

144F Fiber Optic Splice Closures

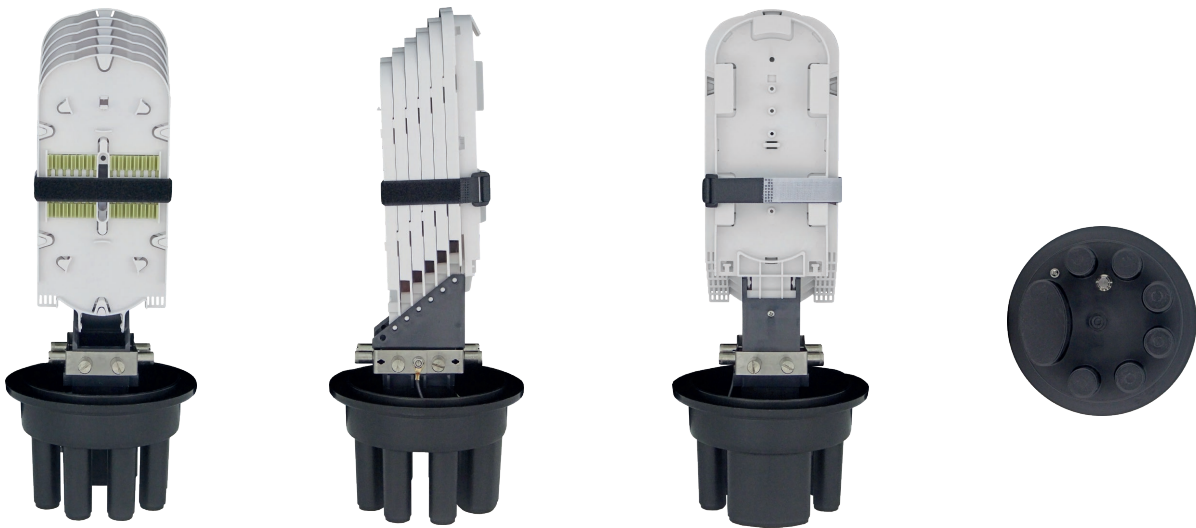
6 Trays, 6x24 Fibers

Features

- May be used for cut, uncut and taut sheath applications.
- May be used for all fiber optic cable.
- Sheath retention & central strength member fasten system included.
- Closure construction and lightweight plastic provides strength and resistance to chemical and U.V attack
- Installation and reentry with a minimum of tools
- All hardware is included
- Protection class: IP68
- RoHS compliance

Application

Underground, Aerial, Vault, Pole Mounting and Wall Mountable



Specifications

Model No.	YT01263   SSC-450175-6P-144-6T/7T-T204B
	450x175mm, 144 Fibers Capacity, 6 Trays, 6 Ports, Enclosure , w/o Mounting Kits
Spliced Fiber Storage Capacity	144 splices (6x24)
Size   Height x Diameter	450mm x 175mm (w/o clamp), 450mm x 230mm (w/ clamp)
Cable Ports	1 oval port (24mm), 4 round ports (17.5mm)

144F Fiber Optic Splice Closures

6 Trays, 6x24 Fibers

Features

- May be used for cut, uncut and taut sheath applications.
- May be used for all fiber optic cable.
- Sheath retention & central strength member fasten system included.
- Closure construction and lightweight plastic provides strength and resistance to chemical and U.V attack
- Installation and reentry with a minimum of tools
- All hardware is included
- Protection class: IP68 with RoHS compliance
- Raw material: MPP modified polypropylene

Application

Underground, Aerial, Vault, Pole Mounting and Wall Mountable



Specifications

Model No.	YT01661   SSC-540170-4P-144-6T/6T-T102A-v1
	540x170mm, 144 Fibers Capacity, 6 Trays, 4 Port, Enclosure , w/o Mounting Kits
Spliced Fiber Storage Capacity	144 splices (6x24)
Size   Height x Diameter	540mm x 170mm (w/o clamp)   540mm x 220mm (w/ clamp)
Cable Ports	1 oval port (25mm), 4 round ports (20mm)

288F Fiber Optic Splice Closures

12 Trays, 12x24 Fibers

Features

- May be used for cut, uncut and taut sheath applications.
- May be used for all fiber optic cable.
- Sheath retention & central strength member fasten system included.
- Closure construction and lightweight plastic provides strength and resistance to chemical and U.V attack
- Installation and reentry with a minimum of tools
- All hardware is included
- Protection class: IP68
- RoHS compliance

Application

Underground, Aerial, Vault, Pole Mounting and Wall Mountable



Specifications

Model No.	YT01028   SSC-566250-6P-288-12T/12T-T102A
	566x250mm, 288 Fibers Capacity, 12 Trays, 6 Port, Enclosure , w/o Mounting Kits
Spliced Fiber Storage Capacity	288 splices (12x24)
Size   Height x Diameter	566mm x 250mm (w/o clamp), 566mm x 300mm (w/ clamp)
Cable Ports	1 oval port (30mm), 6 round ports (30mm)



864F Fiber Optic Splice Closures

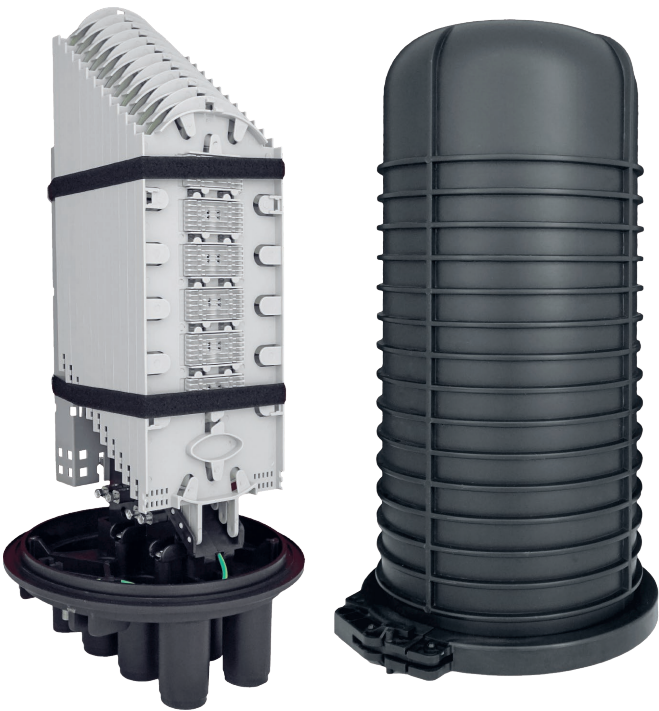
12 Trays, 12x72 Fibers

Features

- May be used for cut, uncut and taut sheath applications.
- May be used for all fiber optic cable.
- Sheath retention & central strength member fasten system included.
- Closure construction and lightweight plastic provides strength and resistance to chemical and U.V attack
- Installation and reentry with a minimum of tools
- All hardware is included
- Protection class: IP68
- RoHS compliance

Application

Underground, Aerial, Vault, Pole Mounting and Wall Mountable



Specifications

Model No.	YT01036   SSC-566250-6P-864-12T/12T-T222
	566x250mm, 864 Fibers Capacity, 12 Trays, 6 Port, Enclosure , w/o Mounting Kits
Spliced Fiber Storage Capacity	864 splices (12x72)
Size   Height x Diameter	566mm x 250mm (w/o clamp), 566mm x 300mm (w/ clamp)
Cable Ports	1 oval port (30mm), 6 round ports (30mm)

288F Fiber Optic Splice Closures

Single Element Max: 24 Trays, 24x12 Fibers

Features

- Modular capacity up to 288 fibers
- May be used for cut, uncut and taut sheath applications.
- May be used for all fiber optic cable.
- Sheath retention & central strength member fasten system included.
- Closure construction and lightweight plastic provides strength and resistance to chemical and U.V attack
- Installation and reentry with a minimum of tools
- All hardware is included
- Protection class: IP68
- RoHS compliance

Application

Underground, Aerial, Vault, Pole Mounting and Wall Mountable



Single Element Tray | Thickness: 8mm  
12 Splices Capacity



Specifications

Model No.	YT01055   SSC-492250-6P-288-24T/24T-SE 492x265m, 288 Fibers Capacity, 24 Trays, 6 Port, Enclosure , w/o Mounting Kits
Model No.	YT00965   SSC-492250-6P-144-12T/24T-SE 492x265m, 144 Fibers Capacity, 12 Trays, 6 Port, Enclosure , w/o Mounting Kits
Model No.	YT01056   SSC-492250-6P-96-8T/24T-SE 492x265m, 96 Fibers Capacity, 8 Trays, 6 Port, Enclosure , w/o Mounting Kits
Spliced Fiber Storage Capacity	288 splices (24x12)
Size   Height x Diameter	492mm x 250mm (w/o clamp), 492mm x 300mm (w/ clamp)
Cable Ports	1 oval port (30mm), 6 round ports (30mm)



576F Fiber Optic Splice Closures

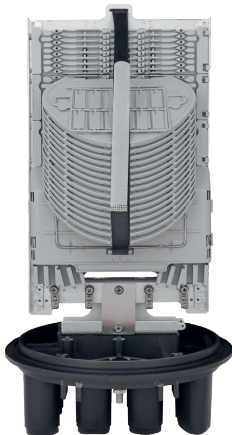
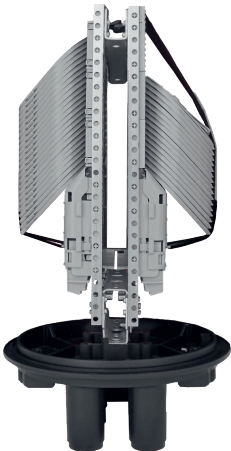
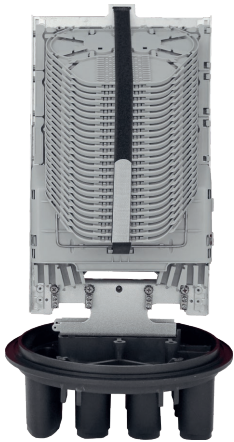
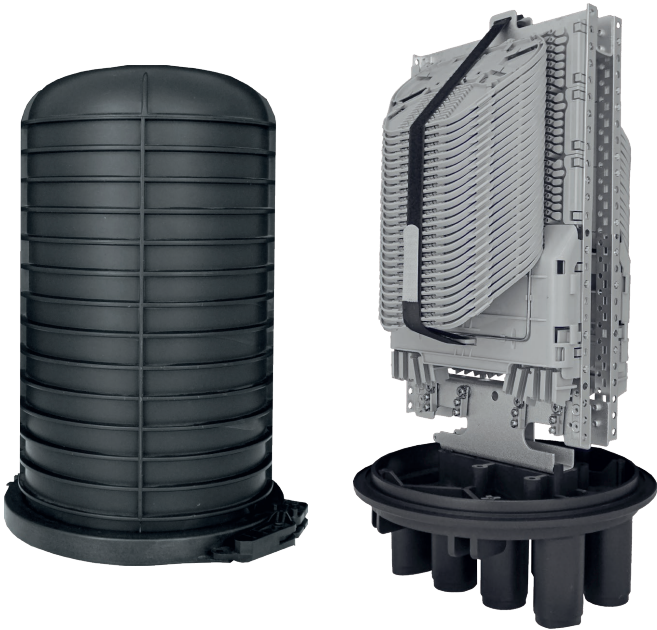
Single Circuit Max: 48 Trays, 48x12 Fibers

Features

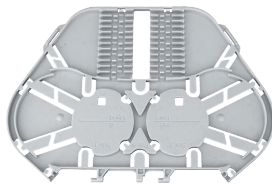
- Modular capacity up to 576 fibers
- May be used for cut, uncut and taut sheath applications.
- May be used for all fiber optic cable.  
Sheath retention & central strength member fasten system included.
- Closure construction and lightweight plastic provides strength and resistance to chemical and U.V attack
- Installation and reentry with a minimum of tools
- All hardware is included
- Protection class: IP68
- RoHS compliance

Application

Underground, Aerial, Vault, Pole Mounting and Wall Mountable



Single Circuit Tray | Thickness: 4mm  
12 Splices Capacity



Specifications

Model No.	YT01052   SSC-492250-6P-576-48T/48T-S12C 576x265m, 576 Fibers Capacity, 48 Trays, 6 Port, Enclosure , w/o Mounting Kits
Model No.	YT01053   SSC-492250-6P-288-24T/48T-S12C 576x265m, 288 Fibers Capacity, 24 Trays, 6 Port, Enclosure , w/o Mounting Kits
Model No.	YT01054   SSC-492250-6P-144-12T/48T-S12C 492x265m, 144 Fibers Capacity, 12 Trays, 6 Port, Enclosure , w/o Mounting Kits
Spliced Fiber Storage Capacity	576 splices (48x12)
Size   Height x Diameter	492mm x 250mm (w/o clamp), 492mm x 300mm (w/ clamp)
Cable Ports	1 oval port (30mm), 6 round ports (30mm)

480F Fiber Optic Splice Closures

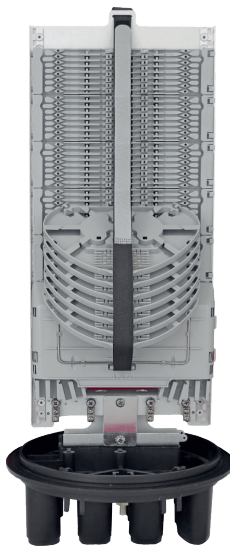
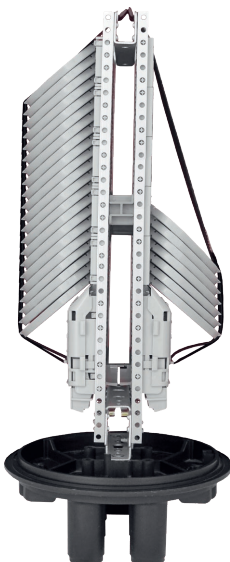
Single Element Max: 40 Trays, 40x12 Fibers

Features

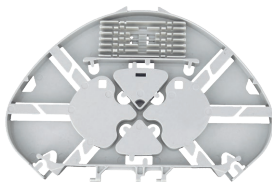
- Modular capacity up to 480 fibers
- May be used for cut, uncut and taut sheath applications.
- May be used for all fiber optic cable.
- Sheath retention & central strength member fasten system included.
- Closure construction and lightweight plastic provides strength and resistance to chemical and U.V attack
- Installation and reentry with a minimum of tools
- All hardware is included
- Protection class: IP68
- RoHS compliance

Application

Underground, Aerial, Vault, Pole Mounting and Wall Mountable



Single Element Tray | Thickness: 8mm  
12 Splices Capacity



Specifications

Model No.	YT01049   SSC-576250-6P-288-24T/40T-SE 576x265m, 288 Fibers Capacity, 24 Trays, 6 Port, Enclosure , w/o Mounting Kits
Model No.	YT01050   SSC-576250-6P-144-12T/40T-SE 576x265m, 144 Fibers Capacity, 12 Trays, 6 Port, Enclosure , w/o Mounting Kits
Model No.	YT01051   SSC-576250-6P-96-8T/40T-SE 576x265m, 96 Fibers Capacity, 8 Trays, 6 Port, Enclosure , w/o Mounting Kits
Spliced Fiber Storage Capacity	480 splices (40x12)
Size   Height x Diameter	576mm x 250mm (w/o clamp), 576mm x 300mm (w/ clamp)
Cable Ports	1 oval port (30mm), 6 round ports (30mm)

960F Fiber Optic Splice Closures

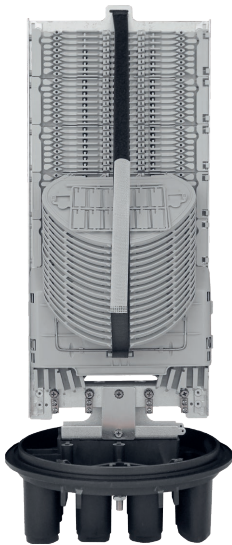
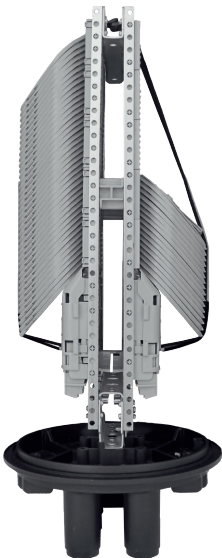
Single Circuit Max: 80 Trays, 80x12 Fibers

Features

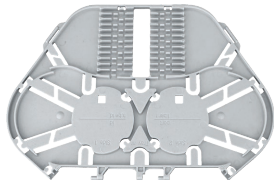
- Modular capacity up to 960 fibers
- May be used for cut, uncut and taut sheath applications.
- May be used for all fiber optic cable.  
Sheath retention & central strength member fasten system included.
- Closure construction and lightweight plastic provides strength and resistance to chemical and U.V attack
- Installation and reentry with a minimum of tools
- All hardware is included
- Protection class: IP68
- RoHS compliance

Application

Underground, Aerial, Vault, Pole Mounting and Wall Mountable



Single Circuit Tray | Thickness: 4mm  
12 Splices Capacity



Specifications

Model No.	YT01047   SSC-576250-6P-576-48T/80T-S12C 576x265m, 576 Fibers Capacity, 48 Trays, 6 Port, Enclosure , w/o Mounting Kits
Model No.	YT00966   SSC-576250-6P-288-24T/80T-S12C 576x265m, 288 Fibers Capacity, 24 Trays, 6 Port, Enclosure , w/o Mounting Kits
Model No.	YT01048   SSC-576250-6P-144-12T/80T-S12C 576x265m, 144 Fibers Capacity, 12 Trays, 6 Port, Enclosure , w/o Mounting Kits
Spliced Fiber Storage Capacity	960 splices (80x12)
Size   Height x Diameter	576mm x 250mm (w/o clamp), 576mm x 300mm (w/ clamp)
Cable Ports	1 oval port (30mm), 6 round ports (30mm)



Wall Mounting Kits



MT14299  
WMK-1 SSC Wall Mounting Kit-1  
(For D:17cm)



MT14300  
WMK-2 SSC Wall Mounting Kit-2  
(For D:25cm)



MT16154  
WMK-3 SSC Wall Mounting Kit-3  
(For D:17cm)

Wall Mounting Kit Selection Matrix

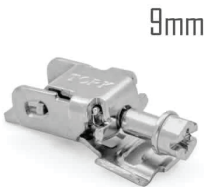
Product Code	Product Code	WMK-1	WMK-2	WMK-3
YT00960	SSC-290140-3P-48-4T/4T-T209A	-	-	Compatible
YT00961	SSC-345175-4P-96-4T/4T-T059A	-	-	Compatible
YT01263	SSC-450175-6P-144-6T/7T-T204B	Compatible	-	Compatible
YT01661	SSC-540170-4P-144-6T/6T-T102A-v1	Compatible	-	Compatible
YT01028	SSC-566250-6P-288-12T/12T-T102A	-	Compatible	-
YT01036	SSC-566250-6P-864-12T/12T-T222	-	Compatible	-
YT01055 / YT00965	SSC-492250-6P-XXX-XXT/24T-SE	-	Compatible	-
YT01052 / YT01053	SSC-492250-6P-XXX-XXT/48T-S12C	-	Compatible	-

Pole Mounting Accessories

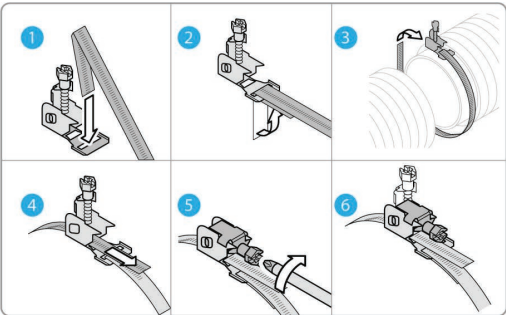
When mounting on poles, the following accessories are required in addition to the above wall mounting kits.



HT02381  
Strip Clamp Roll 9mmx30 meters



HT02382  
Clamp Clip 9 mm (50 pc/pack)





[telecom.samm.com/create-account](https://telecom.samm.com/create-account)

Create an account to receive our  
news, updates and discounts.



## TURKIYE

### Company

SAMM Teknoloji İletişim San. ve Tic. A.Ş.

### Address

GOSB İhsandede Cd. 800. Sok No: 802,  
41400 Gebze-Kocaeli, Türkiye

### Telephone

+90 444 1 726 / +90 (262) 677 16 80  
(Fax) +90 (262) 677 16 81

### Email

info@samm.com



## GERMANY

### Company

SAMM GmbH

### Address

Niederstraße 18  
40789 Monheim/Deutschland

### Telephone

+49 176 814 655 76  
+49 176 814 655 84

### Email

de@samm.com

## Telecom Group

### Website

telecom.samm.com

### Email

telecom@samm.com



Our Website

