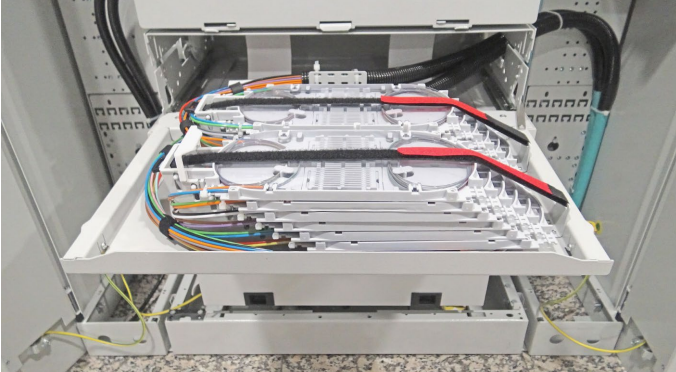


19"/21" FSSHD 3U High Density Fiber Splice Shelves

FSSHD Series Splice Shelf has been designed to splice the incoming fibers from high density backbone cables and for any fiber splicing need – Internal or External. The splicing is completed in user friendly and spacious plastic trays, with each tray supporting up to 288F.



Splicing In-Coming Cables

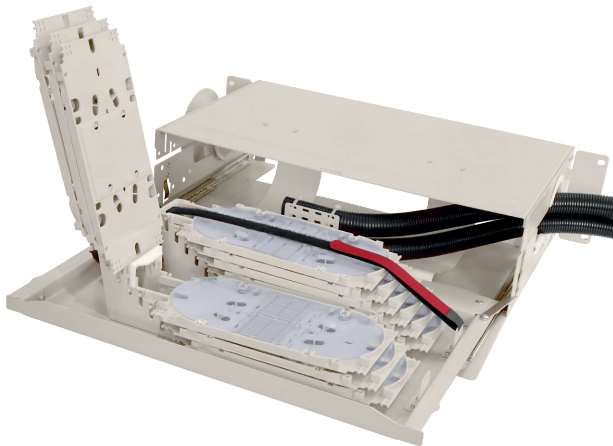


Splicing with Pre-terminated Assemblies



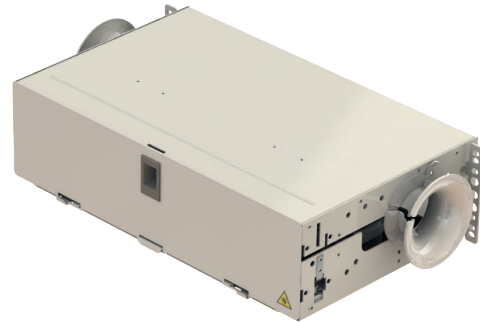
Features

- Designed for Mass Fusion Splicing
- 12 trays capacity in 3U
- 288F splice capacity
- 24F fiber trays
- 2x12F single row fusion splice holders
- 21" Extension Brackets are also included in standard content
- Standard Color Powder-coated RAL7035(Grey)
- Operating temperature: -20°C / +80°C



Applications

- Telecommunication networks
- Data centers, Co-location DC
- LAN or Campus wide Network
- Broadband network



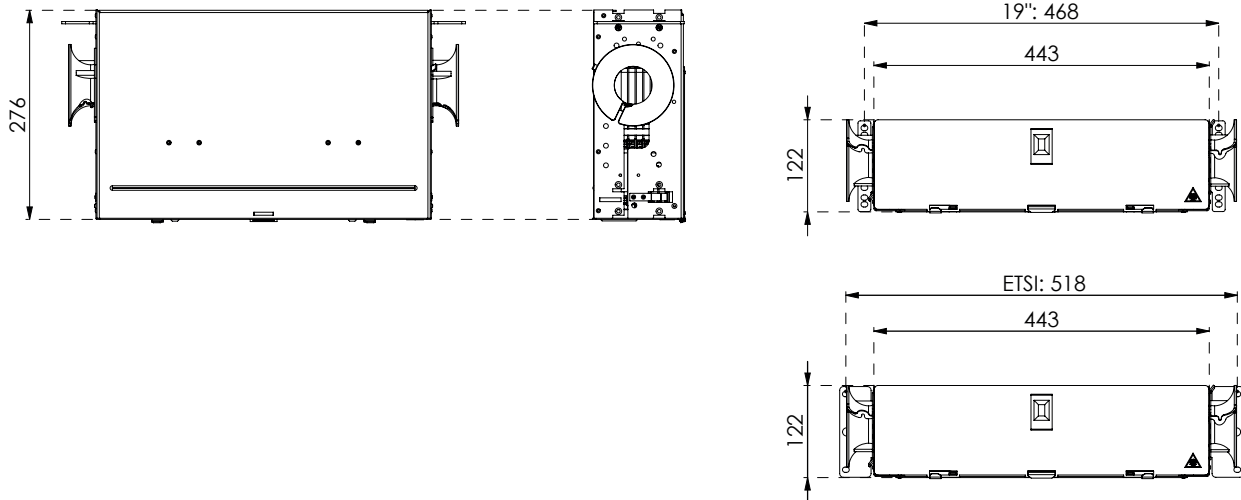
Ordering Codes

Order Code	MT15035
Item Code	FSSHD 19/21-3U-12T(24F)/12T(24F)-288
Description	3U 19" High Count Fiber Splice Shelf,12 Tray,288 Fiber Capacity , with 21" Extension Bracket,Panel Color:RAL 7035

Standard Panel Accessories

Picture	Description	Picture	Description
	19" and 21" Mounting Set		1 Set of M6 Rack Mounting Set
	Velcro Tape x2 Pcs		Tie Wrap Set
	Fiber ID Card x2 Pcs		Flex Tubes Size 17x4 meters **
	Splice Tray 24 F x12 Pcs		Plastic Tray Holder x2 Pcs
	Plastic Pigtail Trunion x1 Pc		60mm Splice Protector x300 Pcs

Dimensions



** Suitable Flex Tube Sizes:

Our standard tube is 17 size. If you need other sizes please supply from local market

Size 17 (16.30-21.40 mm)

Size 14 (13.90-18.40 mm)

Size 12 (12.15-15.80 mm)

Size 10 (09.60-13.20 mm)