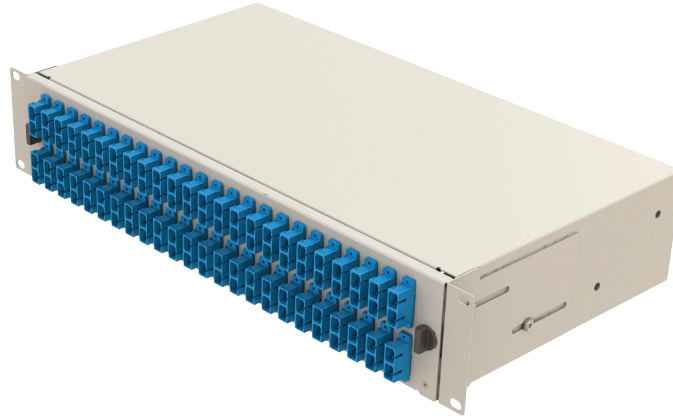


## 2U Mechanical Sliding - Patch & Splice Management Panels

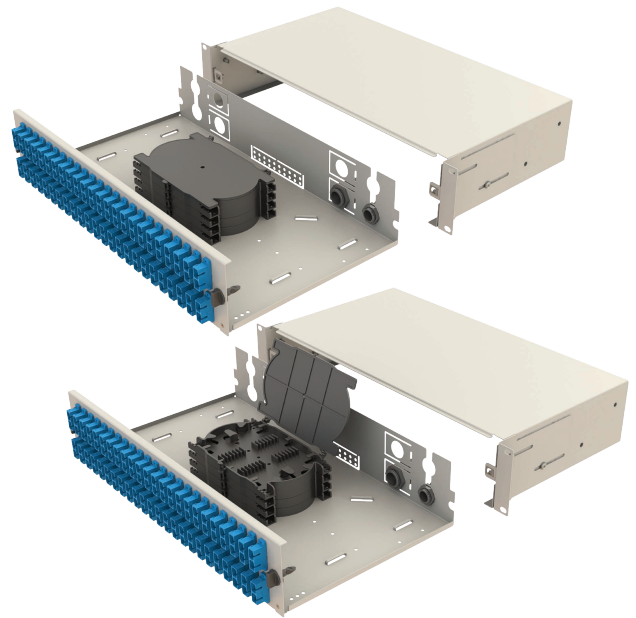
Front Patching Shelves are used to terminate and distribute optical fiber cables, termination box has 48 ports (from 48 fibers to 96 fibers). They are convenient equipment to organize and connect the fiber optic links. It is suitable for the use in telecommunication network, central office optical cable system and premise fiber networks.

Typical type of our fiber patch panels are rack mounted, they are with optional different kinds of fiber optic adapters ports and pre-installed inner trays and accessories, optional pigtailed with different types, common style is SC/FC/ST/LC, E2000 types can be custom made based on quantity

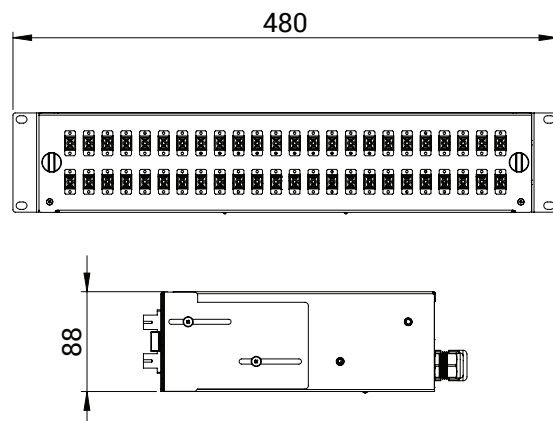
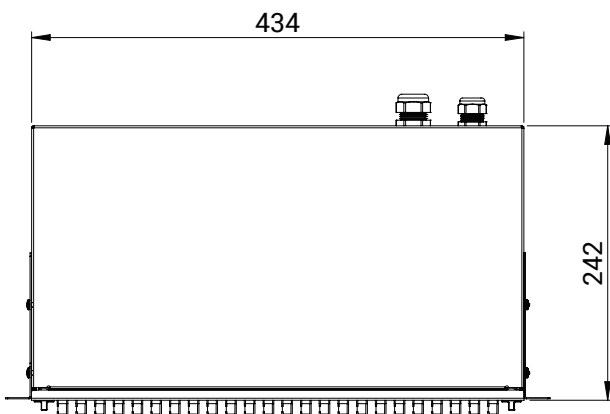


### Features

- Easy time-saving installation
- Different front panel options
- Compact and safe design
- Rear cable entry
- Captive Panel Screws ensure easy/safe locking of the drawer
- Easy connector and cable accessibility
- Bend radius protection

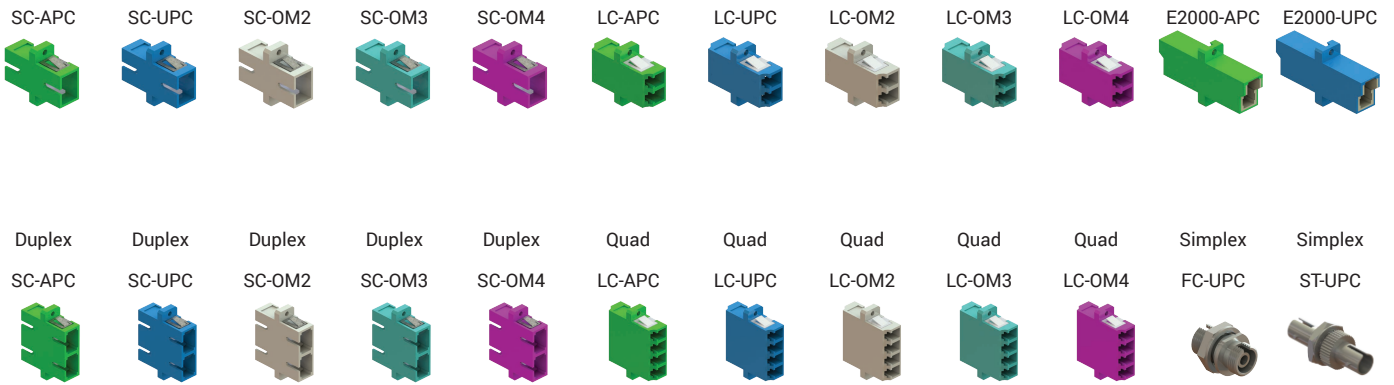


### Dimensions



## 2U - Mechanical Sliding - Front Panels

Choose Your Panel			
Front Panels	Panel Code	Hole Count	Available Adapter- Fiber Capacity
	EFP21	48	SC Simplex - 48 Fibers LC Duplex - 96 Fibers E2000 Simplex - 48 Fibers
	EFP22	48	SC Duplex - 96 Fibers
	EFP23	48	FC Simplex - 48 Fibers ST Simplex - 48 Fibers



## Ordering Coding 19" Front Patch Shelves

(sample coding)

EFRPS - 2U - MS - EFP21 - A2 - SC - SX - 48

Height	Rail System	Front Panel	Fiber Type	Connector	Port Options	Fiber Count	
88 mm:	2U	Mechanical Sliding: MS	Panel-21: EFP21 Panel-22: EFP22 Panel-23: EFP23	Empty: NN G657.A1: A1 G657.A2: A2 G652.OM2: M2 G652.OM3: M3 G652.OM4: M4	Empty: NN SC/UPC: SC SC/APC: SA LC/UPC: LC LC/APC: LA FC/UPC: FC FC/APC: FA ST/UPC: ST E2000/UPC: E2 E2000/APC: EA	Empty: NN Simplex: SX Duplex: DX Quad: QD	Empty: NN 48 Fibers: 48 96 Fibers: 96