

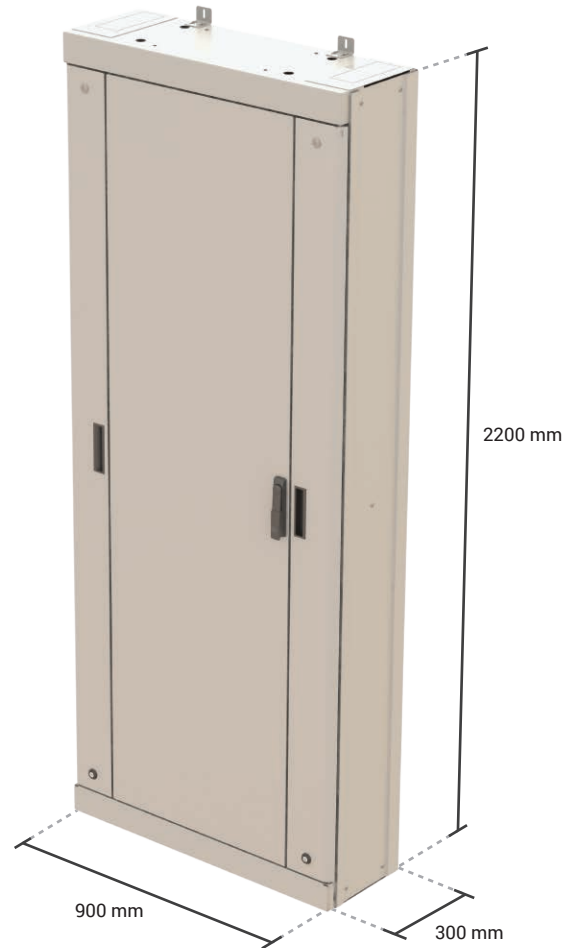
Floor Standing Fiber Optic Cabinet

FDF-FL-22

FDF Series Optical Distribution Frames (ODF) are high density fiber optic management frames that serve as a central cross-connect in the Main Distribution Areas.

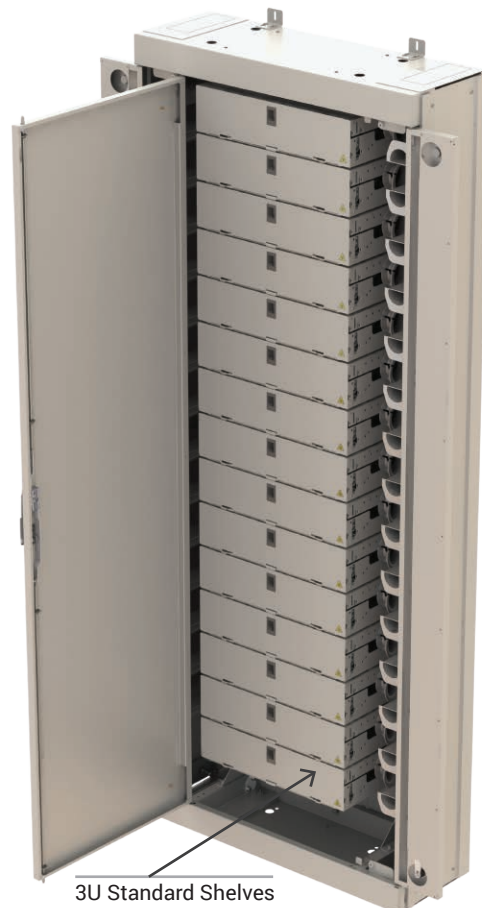
FDF-WM series floor standing cabinets are fiber management systems that are designed to be used in an exchange, head end or customer premises environment.

Shelves are typically used to house connector panels and separate shelves for splicing, patching, equipment and devices.



Properties

- Swing handle with lock and key.
- Painted (powder coated) in light-grey (RAL-7035).
- Levelling or height adjuster legs.
- Easy and time-saving installations.
- Compact and safe design.
- Confirms 19" or ETSI installations.
- Side duct Cable attachment plates can be mounted left, right, top or bottom.
- Wall mounting: stand alone or multiple side-to-side mounting.
- Back-to-back mounting.
- Easy adaptation to specific applications by variation of the rack configuration, the shelf configuration and routings of pigtails and jumpers.
- Easy access to cables, pigtails and jumpers during installation, maintenance and upgrade.
- Bend control on all fiber routing.
- Horizontal and vertical patchcord management for storage of functional patchcord over length.
- Horizontal and vertical patchcord storage excess patchcord over length between the shelves and either the equipment or adjacent racks.
- High density side access type of modules is also designed to fit a variety of termination, splice, and storage applications.
- ETSI mounting profiles with cage nuts for shelf mounting are provided at the rear of the rack, allowing optimal access from the front.



3U Standard Shelves

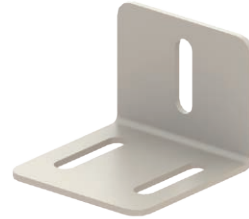
Qty: 14 - Height: 125mm - 72 ETSI Units

Standard Accessories

Cable attachment plate with C-profile



Wall Connection Kit



Standard Accessories

Cable Management Drums



Cable Attachment Extension Kit



Installer Kit



Cable Attachment Extension Kit

