

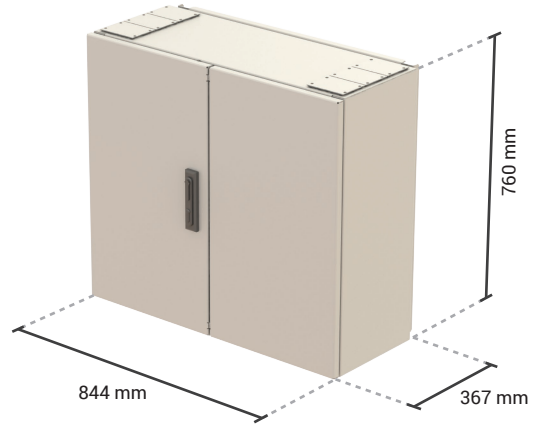
Wall Mount Fiber Optic Cabinet

FDF-WM-01

FDF Series Optical Distribution Frames (ODF) are high density fiber optic management frames that serve as a central cross-connect in the Main Distribution Areas.

FDF-WM series wall-mountable cabinets are fiber management systems that are designed to be used in an exchange, head end or customer premises environment.

Shelves are typically used to house connector panels and separate shelves for splicing, patching, equipment and devices.



3U Standard Shelves

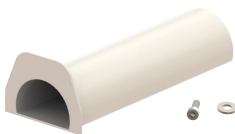
Qty: 5 - Height: 125mm - 27 ETSI Units

Properties

- Easy installable wall hanging plate
- Field adaptive mounting profiles to 19" or ETSI width
- Swing handle with lock and key
- Extensive cable inlet/outlet possibilities on top and bottom, left and right
- Cable attachment plate with C-profile included
- Dust-proof, environmental and mechanical protection for the fiber management functions
- Painted (powder coated) in lightgrey (RAL-7035)

Optional Accessories

Cable Management Drums



Installer Kit



Cable Termination Kits



Wall Mounting Frame

