

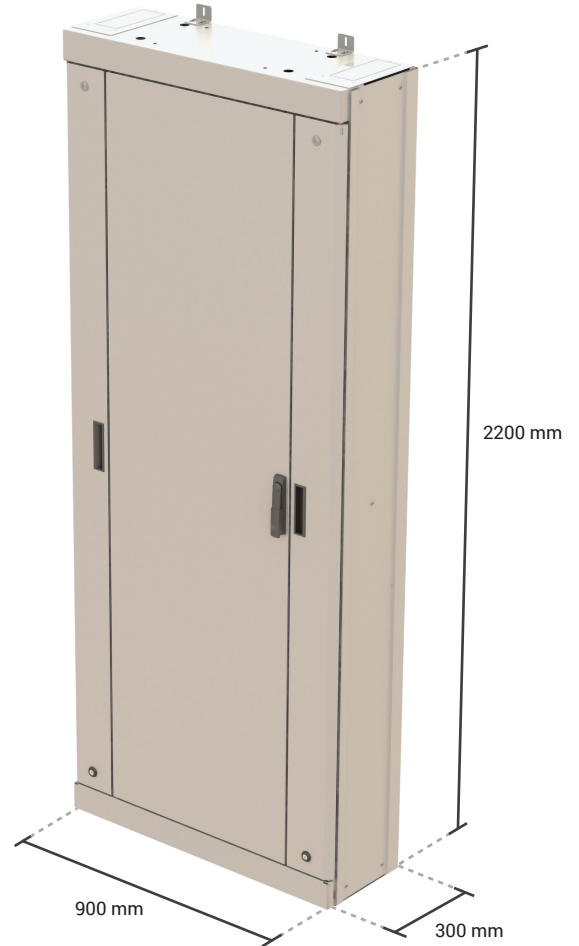
## Floor Standing Fiber Optic Cabinet

FDF-FL-22/30

FDF Series Optical Distribution Frames (ODF) are high density fiber optic management frames that serve as a central cross-connect in the Main Distribution Areas.

FDF-FL series floor standing cabinets are fiber management systems that are designed to be used in an exchange, head end or customer premises environment.

Shelves are typically used to house connector panels and separate shelves for splicing, patching, equipment and devices.



## Properties

- Swing handle with lock and key.
- Painted (powder coated) in light-grey (RAL-7035).
- Levelling or height adjuster legs.
- Easy and time-saving installations.
- Compact and safe design.
- Confirms 19" or ETSI installations.
- Side duct Cable attachment plates can be mounted left, right, top or bottom.
- Wall mounting: stand alone or multiple side-to-side mounting.
- Back-to-back mounting.
- Easy adaptation to specific applications by variation of the rack configuration, the shelf configuration and routings of pigtails and jumpers.
- Easy access to cables, pigtails and jumpers during installation, maintenance and upgrade.
- Bend control on all fiber routing.
- Horizontal and vertical patchcord management for storage of functional patchcord over length.
- Horizontal and vertical patchcord storage excess patchcord over length between the shelves and either the equipment or adjacent racks.
- High density side access type of modules is also designed to fit a variety of termination, splice, and storage applications.
- ETSI mounting profiles with cage nuts for shelf mounting are provided at the rear of the rack, allowing optimal access from the front.



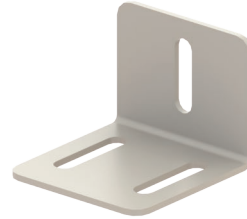
Qty: 14 - Height: 125mm - 72 ETSI Units

## Standard Accessories

Cable attachment plate with C-profile

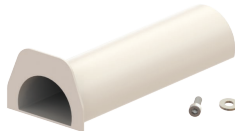


Wall Connection Kit

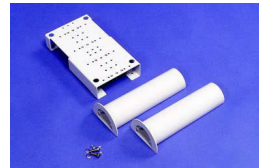


## Optional Accessories

Cable Management Drums



Cable Attachment Extension Kit



Installer Kit



Cable Attachment Extension Kit



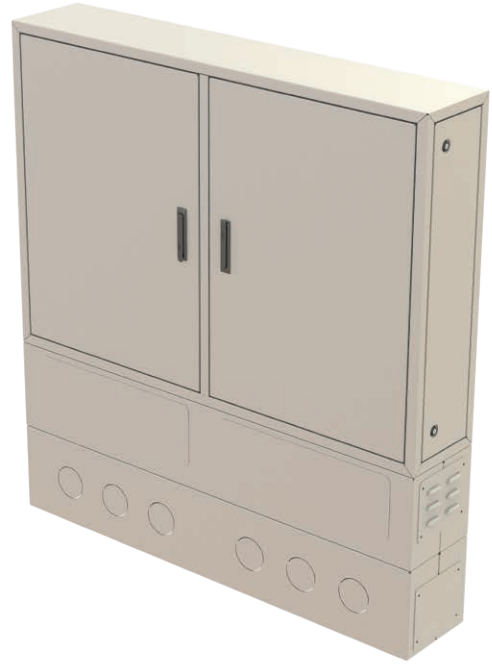
## Street Distribution Cabinet - Twin

FDF-ODC-2-X Outdoor

Designed for fiber termination and management, using 19" FIST fiber optic modular and passive equipment; FDF-ODC-2-X are outdoor metal street cabinets that provide, IP 65 rated, reliable environmental and mechanical protection; especially against dirt and dust. FDF-ODC-2-X can be installed above the ground or with the lower cabling section flushed below concrete structures.

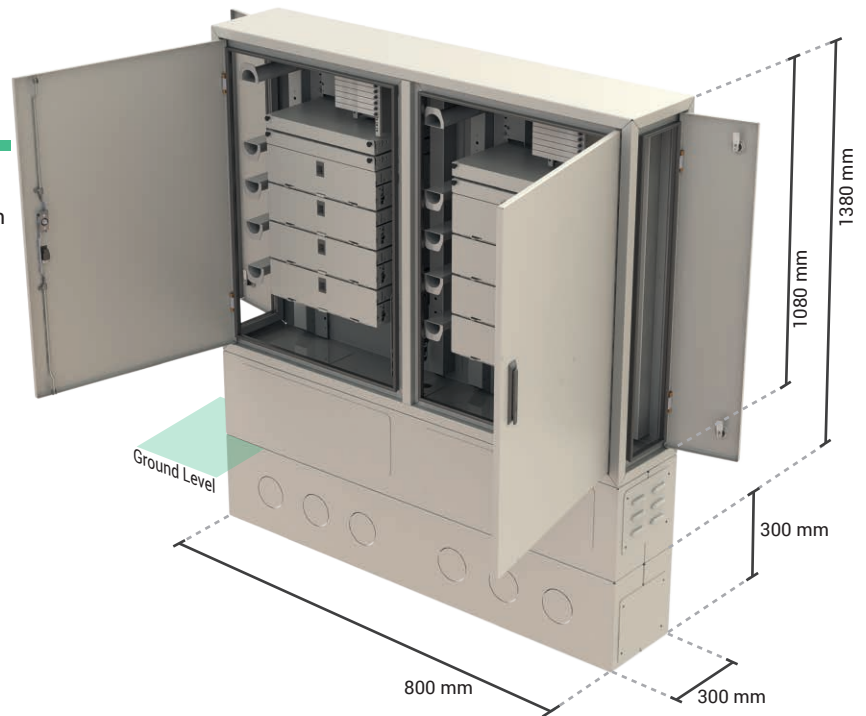
With its practical design, front lid and side lids it makes module and cable assembly and cable management very easy. In addition, the lid has two open positions for comfortable working in harsh environments.

The 19" rack compatible design offers maximum flexibility for installing equipment that adapts next-generation requirements; with cable management drums.



### Properties

- Easy installable wall hanging plate
- Field adaptive mounting profiles to 19" or ETSI width
- Swing handle with lock and key
- Extensive cable inlet/outlet possibilities on top and bottom, left and right
- Cable attachment plate with C-profile included
- Dust-proof, environmental and mechanical protection for the fiber management functions
- Painted (powder coated) in lightgrey (RAL-7035)



### Standard Accessories

Cable attachment plate with C-profile



Wall Connection Kit

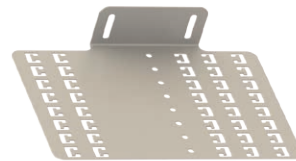


### Optional Accessories

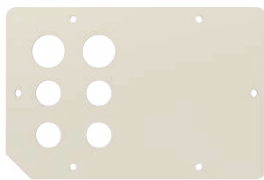
Cable Management Drums



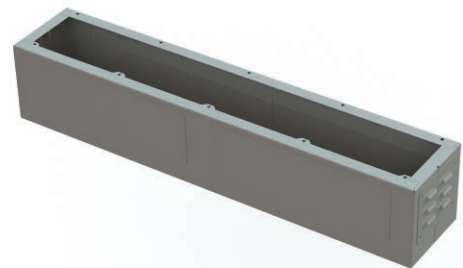
Cable Connection Plate



Cable Management Drums

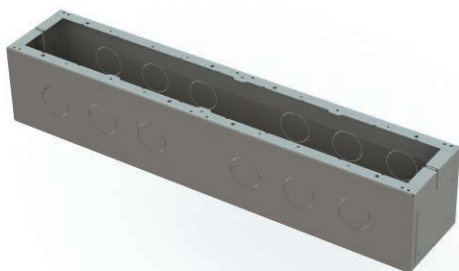


Cabinet Bottom Base



### Optional Accessories

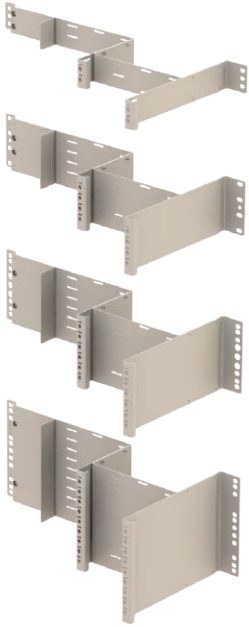
Elevation Base



Triple Joint for Spiral Cable Pipe



## Splitter Connection Modules



1U - Module: 4 OCM5 Module Capacity

2U - Module: 8 OCM5 Module Capacity

3U - Module: 12 OCM5 Module Capacity

4U - Module: 18 OCM5 Module Capacity

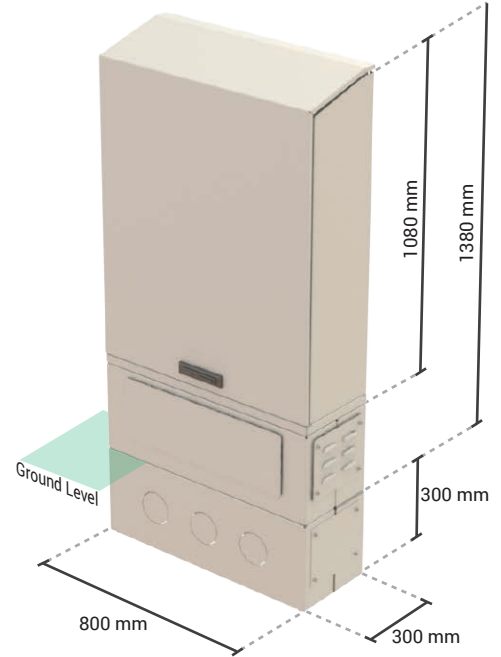
## Wall Mount Fiber Optic Cabinet

FDF-ODC-1

ODC-1 cabinet provides fiber easy termination and management with IP 65 rated protection in outdoor environments and it is compatible with 19" FIST fiber optic modules and passive equipment, ensuring maximum flexibility for next-generation technology adaptation.

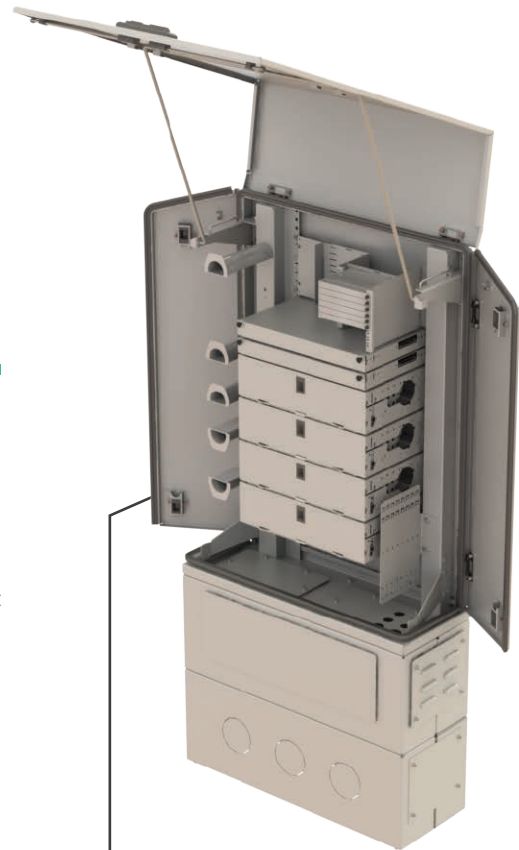
ODC-1 can be installed above the ground or with the lower cabling section flushed below concrete structures.

Thanks to its special design, the top cover and side covers can all be opened widely which makes module assembly and cable assembly very easy. The top cover can be fixed in two positions for more comfortable working environment in bad weather conditions. In addition, plastic Drums allow very good cable management and routing to be performed with high efficiency.



## Properties

- Easy installable wall hanging plate
- Field adaptive mounting profiles to 19" or ETSI width
- Swing handle with lock and key
- Extensive cable inlet/outlet possibilities on top and bottom, left and right
- Cable attachment plate with C-profile included
- Dust-proof, environmental and mechanical protection for the fiber management functions
- Painted (powder coated) in lightgrey (RAL-7035)



3U Standard Shelves

Qty: 14 - Height: 125mm - 72 ETSI Units

### Standard Accessories

Cable attachment plate with C-profile



Wall Connection Kit

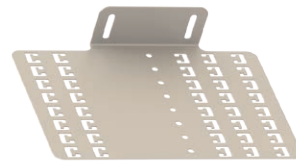


### Optional Accessories

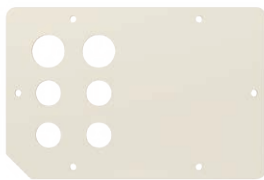
Cable Management Drums



Cable Connection Plate



Cable Management Drums



Cabinet Bottom Base



### Optional Accessories

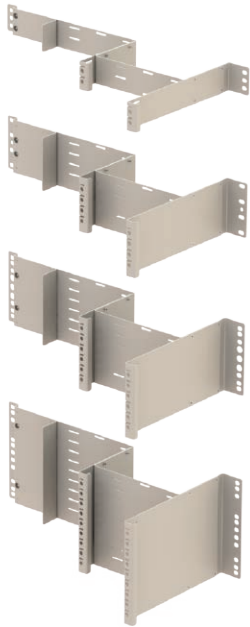
Elevation Base



Triple Joint for Spiral Cable Pipe



## Splitter Connection Modules



1U - Module: 4 OCM5 Module Capacity

2U - Module: 8 OCM5 Module Capacity

3U - Module: 12 OCM5 Module Capacity

4U - Module: 18 OCM5 Module Capacity



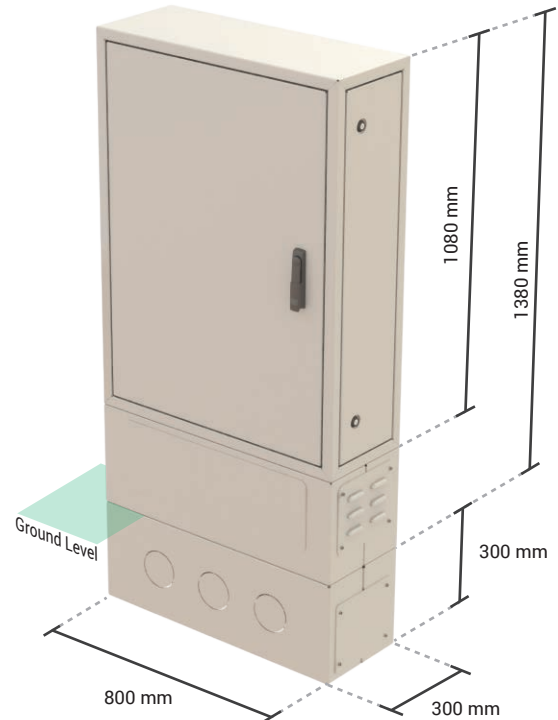
## Street Distribution Cabinet - IP55

FDF-ODC-2-X Outdoor

Designed for fiber termination and management, using 19" FIST fiber optic modular and passive equipment; FDF-ODC-2-X are outdoor metal street cabinets that provide, IP 65 rated, reliable environmental and mechanical protection; especially against dirt and dust. FDF-ODC-2-X can be installed above the ground or with the lower cabling section flushed below concrete structures.

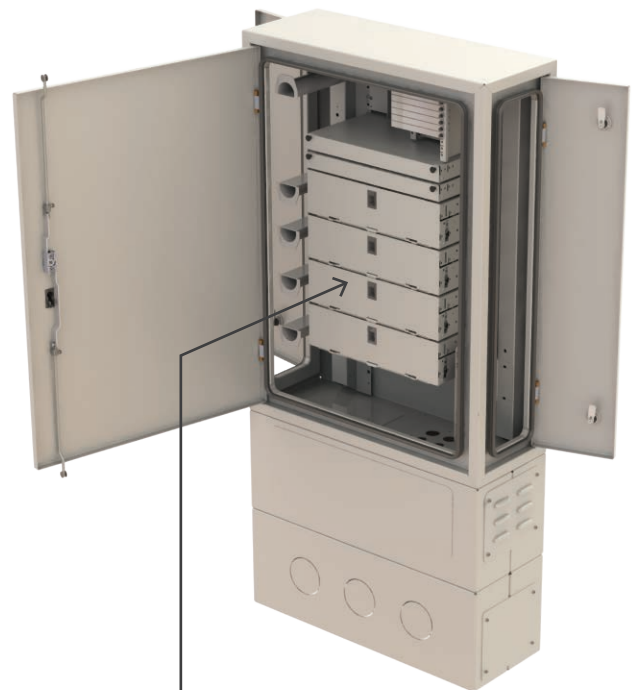
With its practical design, front lid and side lids it makes module and cable assembly and cable management very easy. In addition, the lid has two open positions for comfortable working in harsh environments.

The 19" rack compatible design offers maximum flexibility for installing equipment that adapts next-generation requirements; with cable management drums.



## Properties

- Swing handle with lock and key.
- Painted (powder coated) in light-grey (RAL-7035).
- Levelling or height adjuster legs.
- Easy and time-saving installations.
- Compact and safe design.
- Confirms 19" or ETSI installations.
- Side duct Cable attachment plates can be mounted left, right, top or bottom.
- Wall mounting: stand alone or multiple side-to-side mounting.
- Back-to-back mounting.
- Easy adaptation to specific applications by variation of the rack configuration, the shelf configuration and routings of pigtails and jumpers.
- Easy access to cables, pigtails and jumpers during installation, maintenance and upgrade.
- Bend control on all fiber routing.
- Horizontal and vertical patchcord management for storage of functional patchcord over length.
- Horizontal and vertical patchcord storage excess patchcord over length between the shelves and either the equipment or adjacent racks.
- High density side access type of modules is also designed to fit a variety of termination, splice, and storage applications.
- ETSI mounting profiles with cage nuts for shelf mounting are provided at the rear of the rack, allowing optimal access from the front.



3U Standard Shelves

Qty: 14 - Height: 125mm - 72 ETSI Units

### Standard Accessories

Cable attachment plate with C-profile

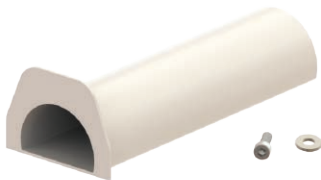


Wall Connection Kit

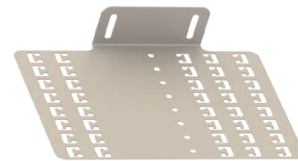


### Optional Accessories

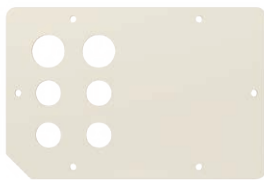
Cable Management Drums



Cable Connection Plate



Cable Management Drums



Cabinet Bottom Base



### Optional Accessories

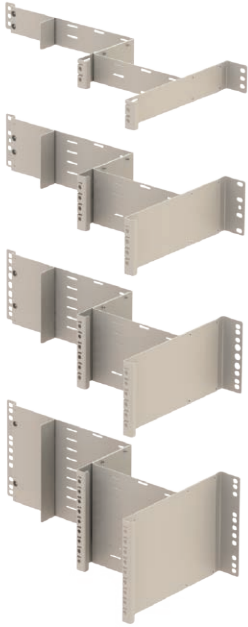
Elevation Base



Triple Joint for Spiral Cable Pipe



## Splitter Connection Modules



1U - Module: 4 OCM5 Module Capacity

2U - Module: 8 OCM5 Module Capacity

3U - Module: 12 OCM5 Module Capacity

4U - Module: 18 OCM5 Module Capacity

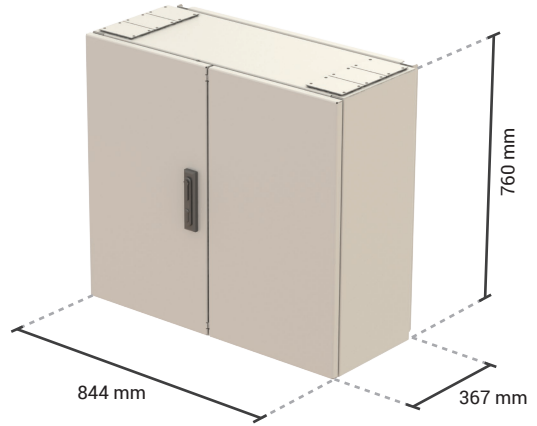
# Wall Mount Fiber Optic Cabinet

FDF-WM-01

FDF Series Optical Distribution Frames (ODF) are high density fiber optic management frames that serve as a central cross-connect in the Main Distribution Areas.

FDF-WM series wall-mountable cabinets are fiber management systems that are designed to be used in an exchange, head end or customer premises environment.

Shelves are typically used to house connector panels and separate shelves for splicing, patching, equipment and devices.



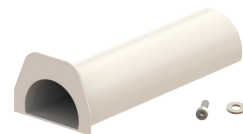
3U Standard Shelves  
Qty: 5 - Height: 125mm - 27 ETSI Units

## Properties

- Easy installable wall hanging plate
- Field adaptive mounting profiles to 19" or ETSI width
- Swing handle with lock and key
- Extensive cable inlet/outlet possibilities on top and bottom, left and right
- Cable attachment plate with C-profile included
- Dust-proof, environmental and mechanical protection for the fiber management functions
- Painted (powder coated) in lightgrey (RAL-7035)

## Optional Accessories

### Cable Management Drums



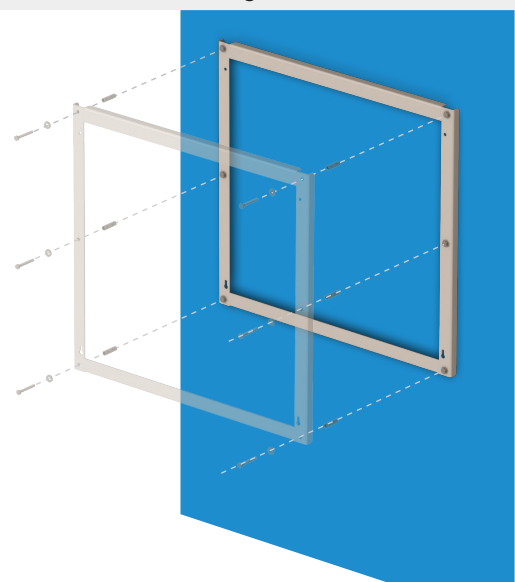
### Installer Kit



### Cable Termination Kits



### Wall Mounting Frame



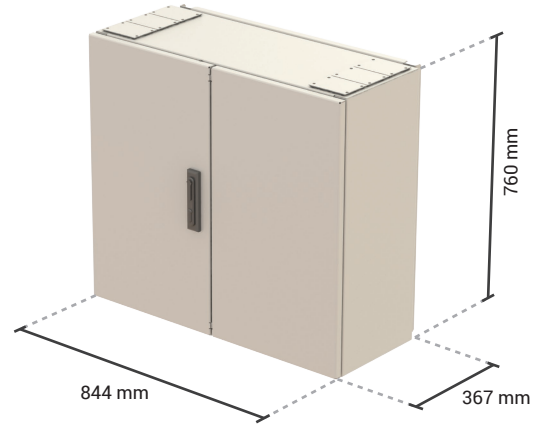
## Wall Mount Fiber Optic Cabinet

FDF-WM-XX

FDF Series Optical Distribution Frames (ODF) are high density fiber optic management frames that serve as a central cross-connect in the Main Distribution Areas.

FDF-WM series wall-mountable cabinets are fiber management systems that are designed to be used in an exchange, head end or customer premises environment.

Shelves are typically used to house connector panels and separate shelves for splicing, patching, equipment and devices.



3U Standard Shelves

Qty: 5 - Height: 125mm - 27 ETSI Units

### Properties

- Easy installable wall hanging plate
- Field adaptive mounting profiles to 19" or ETSI width
- Swing handle with lock and key
- Extensive cable inlet/outlet possibilities on top and bottom, left and right
- Cable attachment plate with C-profile included
- Dust-proof, environmental and mechanical protection for the fiber management functions
- Painted (powder coated) in lightgrey (RAL-7035)

### Optional Accessories

#### Cable Management Drums



#### Installer Kit



#### Cable Termination Kits



#### Wall Mounting Frame

