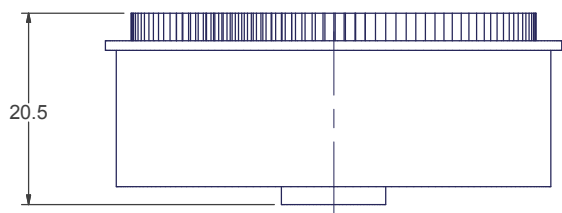
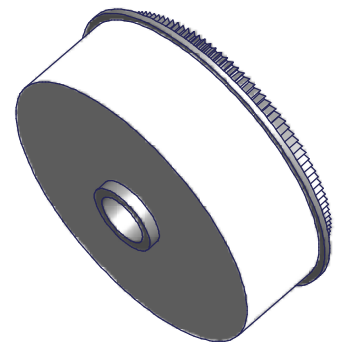
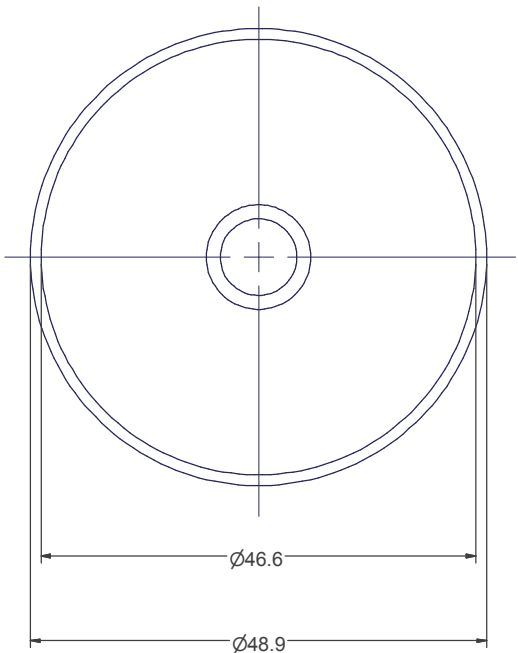


8 | 7 | 6 | 5 | 4 | 3 | 2 | 1



PRODUCT DESCRIPTION	
CONSTRUCTION	CLOTH ON A REEL
MAIN UNIT DIMENSIONS	49 DIA X 19.2 (SINGLE REEL)
CLOTH DIMENSIONS	(L)13m X (W)16mm
PACKAGING DIMENSIONS	6 REELS/BOX (With installation instructions)
DIMENSIONS	153 X 103 X 25 mm
WEIGHT	140 GRAMS



USCONEC LTD. PROPRIETARY
THIS DOCUMENT AND THE ASSOCIATED DATA CONTAIN RESTRICTED INFORMATION THAT IS USCONEC LTD. PROPERTY. DISCLOSE OR DUPLICATE FOR OTHERS ONLY AS AUTHORIZED BY USCONEC LTD.

Material:

REV	DATE	DESCRIPTION	ECN
A	11/27/02	RELEASE TO SALES	00370
B	2/7/03	CHART TEXT "DESCRIPTION" WAS "DISCRPTION"	00393
C	3/7/08	ADDED CLOTH DIMENSIONS TO TABLE	01004
D1	07/13/11	DWG # WAS C10904	01348
D	07/18/11	RELEASE	01348

▲ DENOTES CRITICAL DIMENSION

Hickory, NC
800-769-0944
www.usconec.com

CUSTOMER DRAWING

USCONEC

TITLE: **CLEANER, REEL REPLACEMENTS, 6-PACK**

SIZE: B | S&M Part No.: 6232 | DWG NO: **C6232** | REV: D

SCALE: N.T.S. | Drafter: J. Howard | Date: 11/8/2002 | SHEET 1 OF 1

METRIC/mm

THIRD ANGLE PROJECTION

8 | 7 | 6 | 5 | 4 | 3 | 2 | 1