

Simplex SC Adapters

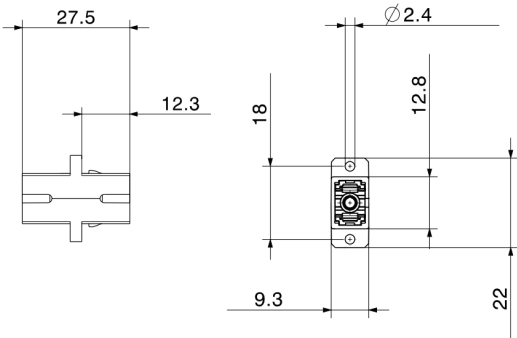
SAMM offers SC adapters in different variations. The SC connector is one of the most common solutions for reliable networks. With the big form ferrule, this connector ensures a reliable optical connection with good mechanical stability. Its push-pull design prevents rotational misalignment.

There are flanged and flangless versions available with many colours options .Adapters meet the international standards IEC 61754-4 / TIA 604-3 and are naturally RoHS/REACH compliant.SC adapters include integrated stainless steel clips for snap mounting on panels.

Characteristics

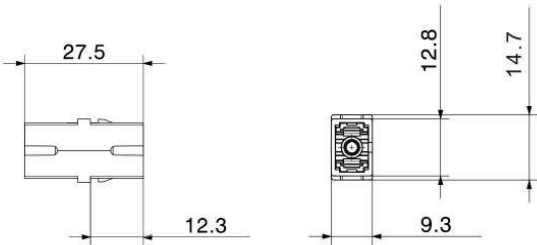
Insertion Loss (Max./Typical)	0.2 / 0.1 dB
Repeatability ΔIL/mating	± 0.1 dB
Operational Temperature	-25 ≤ T ≤ +70 °C
Storage Temperature	-40 ≤ T ≤ +80 °C
Mating Cycles	1000 matings
Alignment Sleeve	Ceramic
Material	LSZH
Flammability	UL94-V0
RoHS	Compliant

SC Simplex Adapters w/ Flange



Order Code	Description	Color
ADP-SC-UPC-SX-SM-B1-CO	SC/UPC Simplex, Single Mode Adapter, w/ Flange	Blue
ADP-SC-APC-SX-SM-B1-CO	SC/APC Simplex, Single Mode Adapter, w/ Flange	Green
ADP-SC-UPC-SX-M2-B1-CO	SC/UPC Simplex, Multi Mode(OM2) Adapter, w/ Flange	Beige
ADP-SC-UPC-SX-M3-B1-CO	SC/UPC Simplex, Multi Mode(OM3) Adapter, w/ Flange	Aqua
ADP-SC-UPC-SX-M4-B1-CO	SC/UPC Simplex, Multi Mode(OM4) Adapter, w/ Flange	Violet

SC Simplex Adapters w/o Flange



Order Code	Description	Color
ADP-SC-UPC-SX-SM-B0-CO	SC/UPC Simplex, Single Mode Adapter, w/o Flange	Blue
ADP-SC-APC-SX-SM-B0-CO	SC/APC Simplex, Single Mode Adapter, w/o Flange	Green
ADP-SC-UPC-SX-M2-B0-CO	SC/UPC Simplex, Multi Mode(OM2) Adapter, w/o Flange	Beige
ADP-SC-UPC-SX-M3-B0-CO	SC/UPC Simplex, Multi Mode(OM3) Adapter, w/o Flange	Aqua
ADP-SC-UPC-SX-M4-B0-CO	SC/UPC Simplex, Multi Mode(OM4) Adapter, w/o Flange	Violet

Characteristics

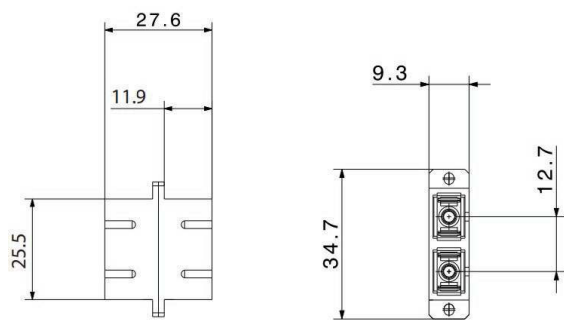
Insertion Loss (Max./Typical)	0.2 / 0.1 dB
Repeatability ΔIL/mating	± 0.1 dB
Operational Temperature	-25 ≤ T ≤ +70 °C
Storage Temperature	-40 ≤ T ≤ +80 °C
Mating Cycles	1000 matings
Alignment Sleeve	Ceramic
Material	LSZH
Flammability	UL94-V0
RoHS	Compliant

Duplex SC Adapters

SAMM offers SC adapters in different variations. The SC connector is one of the most common solutions for reliable networks. With the big form ferrule, this connector ensures a reliable optical connection with good mechanical stability. Its push-pull design prevents rotational misalignment.

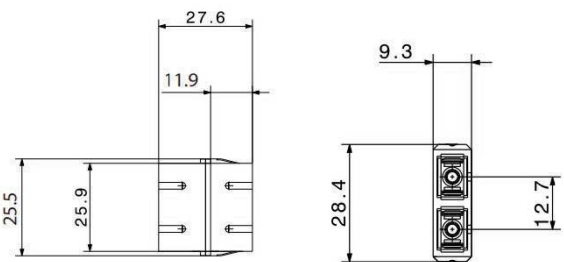
There are flanged and flangless versions available with many colours options .Adapters meet the international standards IEC 61754-4 / TIA 604-3 and are naturally RoHS/REACH compliant.SC adapters include integrated stainless steel clips for snap mounting on panels.

SC Dublex Adapters w/ Flange



Order Code	Description	Color
ADP-SC-UPC-DX-SM-B1-CO	SC/UPC Duplex, Single Mode Adapter, w/ Flange	Blue
ADP-SC-APC-DX-SM-B1-CO	SC/APC Duplex, Single Mode Adapter, w/ Flange	Green
ADP-SC-UPC-DX-M2-B1-CO	SC/UPC Duplex, Multi Mode(OM2) Adapter, w/ Flange	Beige
ADP-SC-UPC-DX-M3-B1-CO	SC/UPC Duplex, Multi Mode(OM3) Adapter, w/ Flange	Aqua
ADP-SC-UPC-DX-M4-B1-CO	SC/UPC Duplex, Multi Mode(OM4) Adapter, w/ Flange	Violet

SC Dublex Adapters w/o Flange



Order Code	Description	Color
ADP-SC-UPC-DX-SM-B0-CO	SC/UPC Duplex, Single Mode Adapter, w/o Flange	Blue
ADP-SC-APC-DX-SM-B0-CO	SC/APC Duplex, Single Mode Adapter, w/o Flange	Green
ADP-SC-UPC-DX-M2-B0-CO	SC/UPC Duplex, Multi Mode(OM2) Adapter, w/o Flange	Beige
ADP-SC-UPC-DX-M3-B0-CO	SC/UPC Duplex, Multi Mode(OM3) Adapter, w/o Flange	Aqua
ADP-SC-UPC-DX-M4-B0-CO	SC/UPC Duplex, Multi Mode(OM4) Adapter, w/o Flange	Violet

Duplex LC Adapters

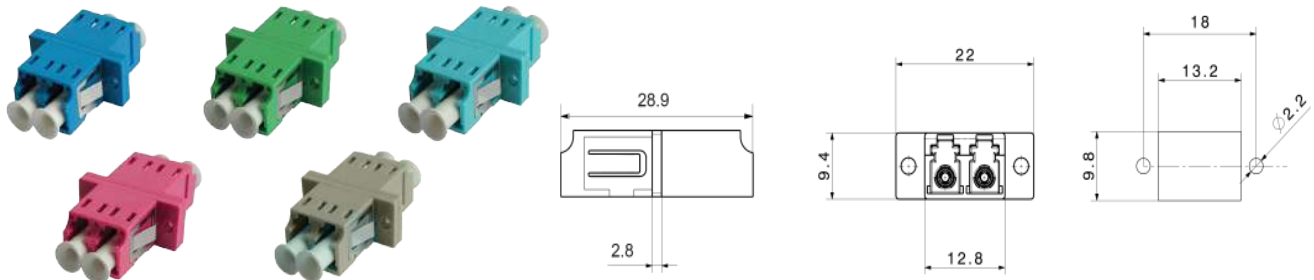
SAMM offers LC adapters in different variations. LC is the connector of choice for many network operators because of its compact size and reliability of connecting quality. There are flanged and flangless versions available with many colours options. Adapters meet the international standards IEC 61754-20/TIA 604-10-A and are naturally RoHS/REACH compliant. LC adapters include integrated stainless steel clips for snap mounting on panels.

LC style adapters are used in high density applications and feature a quick plug in installation.

Characteristics

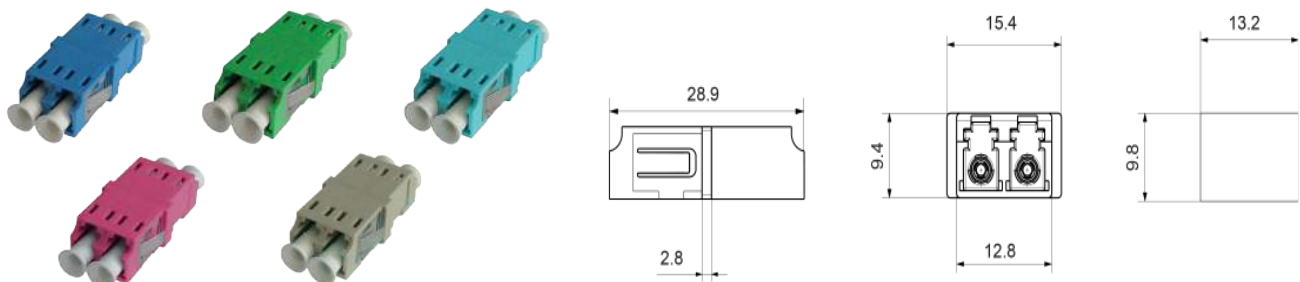
Insertion Loss (Max./Typical)	0.2 / 0.1 dB
Repeatability Δ IL/mating	± 0.1 dB
Operational Temperature	$-25 \leq T \leq +70$ °C
Storage Temperature	$-40 \leq T \leq +80$ °C
Mating Cycles	1000 matings
Alignment Sleeve	Ceramic
Material	LSZH
Flammability	UL94-V0
RoHS	Compliant

LC Duplex Adapters w/ Flange



Order Code	Description	Color
ADP-LC-UPC-DX-SM-B1-CO	LC/UPC Duplex, Single Mode Adapter, w/ Flange	Blue
ADP-LC-APC-DX-SM-B1-CO	LC/APC Duplex, Single Mode Adapter, w/ Flange	Green
ADP-LC-UPC-DX-M2-B1-CO	LC/UPC Duplex, Multi Mode(OM2) Adapter, w/ Flange	Beige
ADP-LC-UPC-DX-M3-B1-CO	LC/UPC Duplex, Multi Mode(OM3) Adapter, w/ Flange	Aqua
ADP-LC-UPC-DX-M4-B1-CO	LC/UPC Duplex, Multi Mode(OM4) Adapter, w/ Flange	Violet

LC Duplex Adapters w/o Flange



Order Code	Description	Color
ADP-LC-UPC-DX-SM-B0-CO	LC/UPC Duplex, Single Mode Adapter, w/o Flange	Blue
ADP-LC-APC-DX-SM-B0-CO	LC/APC Duplex, Single Mode Adapter, w/o Flange	Green
ADP-LC-UPC-DX-M2-B0-CO	LC/UPC Duplex, Multi Mode(OM2) Adapter, w/o Flange	Beige
ADP-LC-UPC-DX-M3-B0-CO	LC/UPC Duplex, Multi Mode(OM3) Adapter, w/o Flange	Aqua
ADP-LC-UPC-DX-M4-B0-CO	LC/UPC Duplex, Multi Mode(OM4) Adapter, w/o Flange	Violet

Characteristics

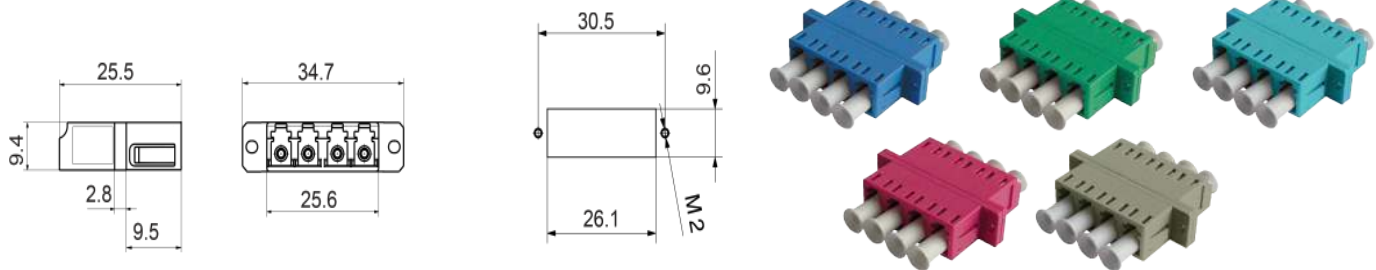
Insertion Loss (Max./Typical)	0.2 / 0.1 dB
Repeatability Δ IL/mating	± 0.1 dB
Operational Temperature	$-25 \leq T \leq +70$ °C
Storage Temperature	$-40 \leq T \leq +80$ °C
Mating Cycles	1000 matings
Alignment Sleeve	Ceramic
Material	LSZH
Flammability	UL94-V0
RoHS	Compliant

Quad SC Adapters

SAMM offers LC adapters in different variations. LC is the connector of choice for many network operators because of its compact size and reliability of connecting quality. There are flanged and flangless versions available with many colours options. Adapters meet the international standards IEC 61754-20/TIA 604-10-A and are naturally RoHS/REACH compliant. LC adapters include integrated stainless steel clips for snap mounting on panels.

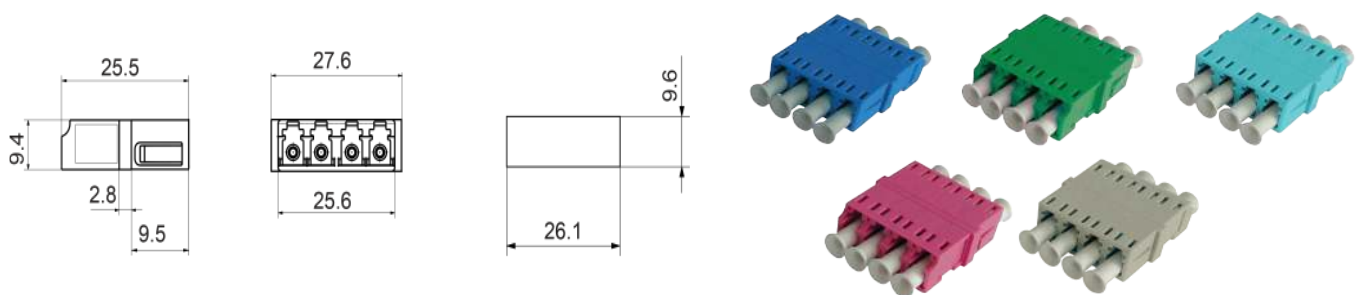
LC style adapters are used in high density applications and feature a quick plug in installation.

LC Quad Adapters w/ Flange



Order Code	Description	Color
ADP-LC-UPC-QD-SM-B1-CO	LC/UPC Quad, Single Mode Adapter, w/ Flange	Blue
ADP-LC-APC-QD-SM-B1-CO	LC/APC Quad, Single Mode Adapter, w/ Flange	Green
ADP-LC-UPC-QD-M2-B1-CO	LC/UPC Quad, Multi Mode(OM2) Adapter, w/ Flange	Beige
ADP-LC-UPC-QD-M3-B1-CO	LC/UPC Quad, Multi Mode(OM3) Adapter, w/ Flange	Aqua
ADP-LC-UPC-QD-M4-B1-CO	LC/UPC Quad, Multi Mode(OM4) Adapter, w/ Flange	Violet

LC Quad Adapters w/o Flange



Order Code	Description	Color
ADP-LC-UPC-QD-SM-B0-CO	LC/UPC Duplex, Single Mode Adapter, w/o Flange	Blue
ADP-LC-APC-QD-SM-B0-CO	LC/APC Duplex, Single Mode Adapter, w/o Flange	Green
ADP-LC-UPC-QD-M2-B0-CO	LC/UPC Duplex, Multi Mode(OM2) Adapter, w/o Flange	Beige
ADP-LC-UPC-QD-M3-B0-CO	LC/UPC Duplex, Multi Mode(OM3) Adapter, w/o Flange	Aqua
ADP-LC-UPC-QD-M4-B0-CO	LC/UPC Duplex, Multi Mode(OM4) Adapter, w/o Flange	Violet

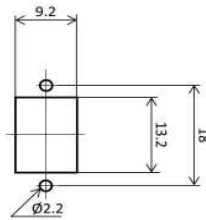
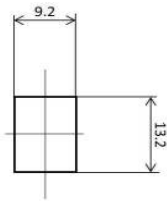
Characteristics

Insertion Loss (Max./Typical)	0.2 / 0.1 dB
Repeatability Δ IL/mating	± 0.1 dB
Operational Temperature	$-25 \leq T \leq +70$ °C
Storage Temperature	$-40 \leq T \leq +80$ °C
Mating Cycles	1000 matings
Alignment Sleeve	Ceramic
Material	LSZH
Flammability	UL94-V0
RoHS	Compliant

Simplex E2000 Adapters

SAMM offers LSH/E-2000 adapters in different variations. LSH/E-2000 is a high performance connector which meets the highest standards by excellence in design and manufacturing processes. Only high quality and high precision materials are used to guarantee connections at the highest level. LSH/E-2000 adapters meet the international standards IEC 61754-15/TIA 604-16.

E2000 Simplex Adapters w/ Flange



Order Code	Description	Color
ADP-E2-UPC-SX-SM-B1-CO	E2000/UPC Simplex, Single Mode Adapter, w/ Flange	Blue
ADP-E2-APC-SX-SM-B1-CO	E2000/APC Simplex, Single Mode Adapter, w/ Flange	Green

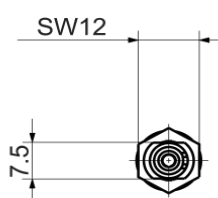
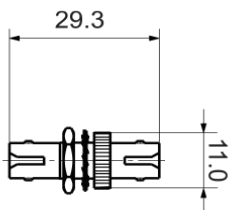
Characteristics

Insertion Loss (Max./Typical)	0.2 / 0.1 dB
Repeatability Δ IL/mating	± 0.1 dB
Operational Temperature	$-25 \leq T \leq +70$ °C
Storage Temperature	$-40 \leq T \leq +80$ °C
Mating Cycles	1000 matings
Alignment Sleeve	Ceramic
Material	LSZH
Flammability	UL94-V0
RoHS	Compliant

Simplex ST Adapter

ST fiber optic adapter has a key snap-lock structure to ensure accuracy when connecting the cables together. The repeatability and durability of ST fiber optic adapter is improved by the metal key. With a precised ceramic or copper cover, ST fiber optic adapter can also keep a high optical and mechanical performance for a long time. It has two standards of simplex and duplex and uses the metal or plastic housing. Complies with IEC 61754-20

ST Simplex Adapter Round



Order Code	Description	Color
ADP-ST-UPC-SX-SM-B3-CO	ST/UPC Simplex, Single Mode Adapter, Round Metal	Grey

Simplex FC Adapters

FC fiber optic adapters can be fastened by a turnbuckle. The housing is threaded to the adapter and therefore assures a stable and rigid connection suitable for test+measurement, industry and medical application. FC fiber optic adapter is able to sustain a stable optical and mechanical performance for a long time. FC fiber optic adapter is easy to operate but sensitive to dust, so it has been enhanced today by using spherical butt end without changing its external structure. FC adapters connect industry standard FC connectors and are available in Square-Mount, D-Mount and Flange-Mount versions. The FC D-Mount adapter easily installs into panel mount applications. Complies with IEC 61754-13 and TIA 604-4-A



Characteristics

Insertion Loss (Max./Typical)	0.2 / 0.1 dB
Repeatability ΔIL/mating	± 0.1 dB
Operational Temperature	-25 ≤ T ≤ +70 °C
Storage Temperature	-40 ≤ T ≤ +80 °C
Mating Cycles	1000 matings
Alignment Sleeve	Ceramic
Material	LSZH
Flammability	UL94-V0
RoHS	Compliant

FC Simplex Adapter Round



Order Code	Description	Color
ADP-FC-UPC-SX-SM-B3-CO	FC/UPC Simplex, Single Mode Adapter, Round Metal	Grey

FC Simplex Adapter Square



Order Code	Description	Color
ADP-FC-UPC-SX-SM-B4-CO	FC/UPC Simplex, Single Mode Adapter, Square Metal	Grey