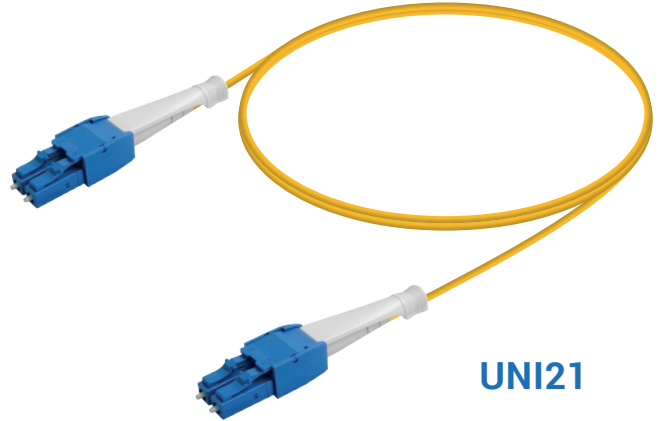


LC Duplex Polarity Reversible Uniboot Patch Cord | Single Mode

UNI21 Series with Push-Pull Release Handle Mechanism

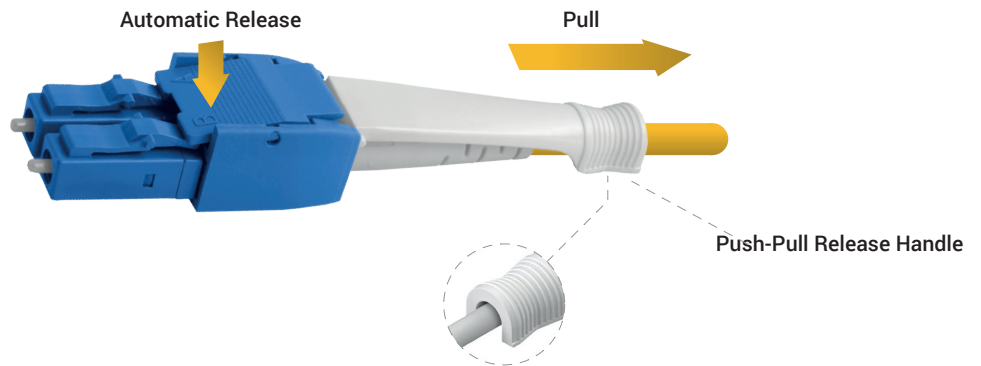
The LC uniboot fiber patch cable have a duplex UNI21 series single-mode LC connector on each side. The patch cord utilises a special round duplex cable that allows duplex transmission within a single 1.2mm/2.5mm cable.

This uniboot LC duplex patch cord has easy Push-Pull connectors for quicker patching, and the polarity of its connectors can be switched by simply opening the connector's housing.



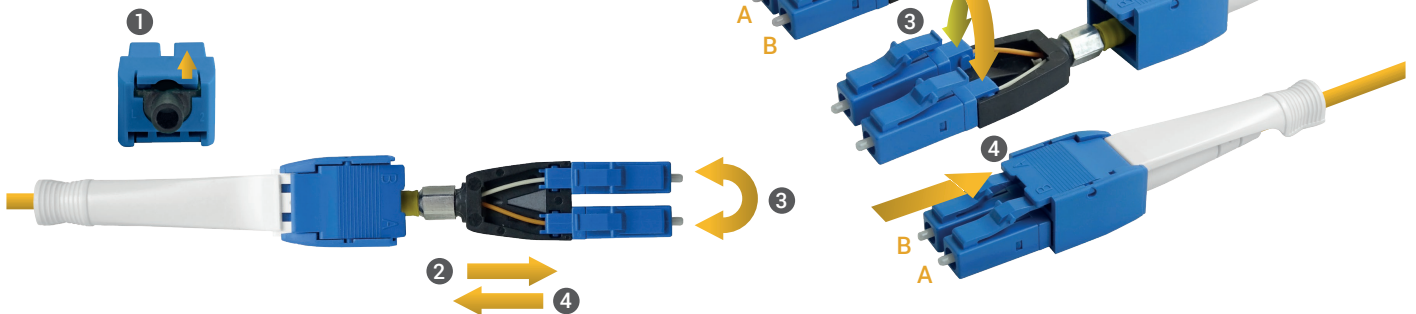
Connector Features

- Effortless release, using the push-pull mechanism
- Reduced cable tangling due to undivided duplex cords
- Detachable casing makes polarity reversal rather simple
- Compatible with cable diameters from 1.2 mm to 2.5 mm
- IEC61754-20 and GR-326-Core compliant
- RoHS/REACH&UL94-V0 inflammability compliant

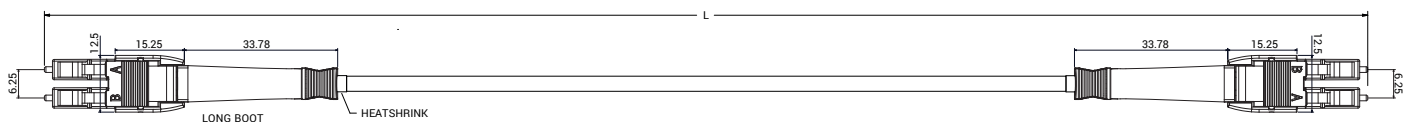


Polarity Reversal

- Release the locking clamp
- Hold the connectors and pull back outer housing
- Remove the connectors from their slots gently, to avoid any damage and reverse the connectors' positions and reinstall them
- Return the housing back until it snaps



Dimensions



Unit of measurement: mm

Connector Specifications

| | |
|-------------------------|---|
| LC Connector Compliance | IEC 61754-20 GR-326-Core RoHS |
| Alignment Technology | Full ceramic ferrule (Zirconia ZrO ₂) |
| Operating Temperature | -40°C to +85°C |
| Flammability | UL94 V-0 |
| Durability | < 0.1dB typical change for > 500 matings |

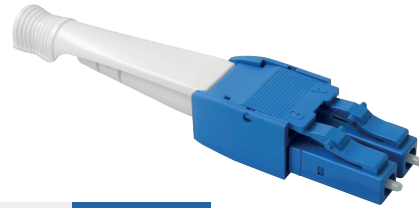
Cable Specifications

- 2 cores round duplex fiber optic cable
- 2.0mm diameter
- Max. Tensile Strength is 300 N
- Min. Bending Radius is 15 mm
- Cable Color: Yellow

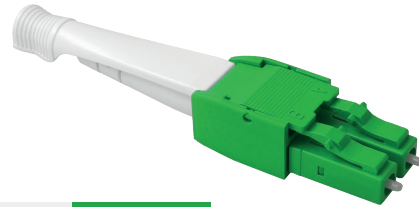
Optical Performance

| | |
|--|--|
| Insertion Loss IEC 61300-3-4 Method B | Single Mode: ≤ 0.30dB Max. 0.15dB Typ. |
| Return Loss IEC61300-3-6 Method B | Single Mode UPC: ≥ 50dB Single Mode APC: ≥ 60dB |

Color Coding



LC-UPC A2 Blue



LC-APC A2 Green

End-face Control Parameters

| | |
|---------------------|--|
| Geometry Inspection | UPC : IEC 61755-3-1 APC : IEC 61755-3-2 |
| Visual Inspection | IEC 61300-3-35 |

Order Coding

I - PC - 02 - RND - 020 - A2 - LC(UNI21) - LC(UNI21) - 005M

| Type | Type | Fiber Count | Cable Type | Diameter | Fiber Type | 1. Connector | 2. Connector | Length |
|-----------|----------------|--------------|------------|-------------|-----------------|--|--|--------|
| Indoor: I | Patch Cord: PC | 2 Fibers: 02 | Round: RND | 2.0 mm: 020 | SM G.657 A2: A2 | LC-UPC: LC(UNI21) LC-APC: LA(UNI21) | LC-UPC: LC(UNI21) LC-APC: LA(UNI21) | ___ M |