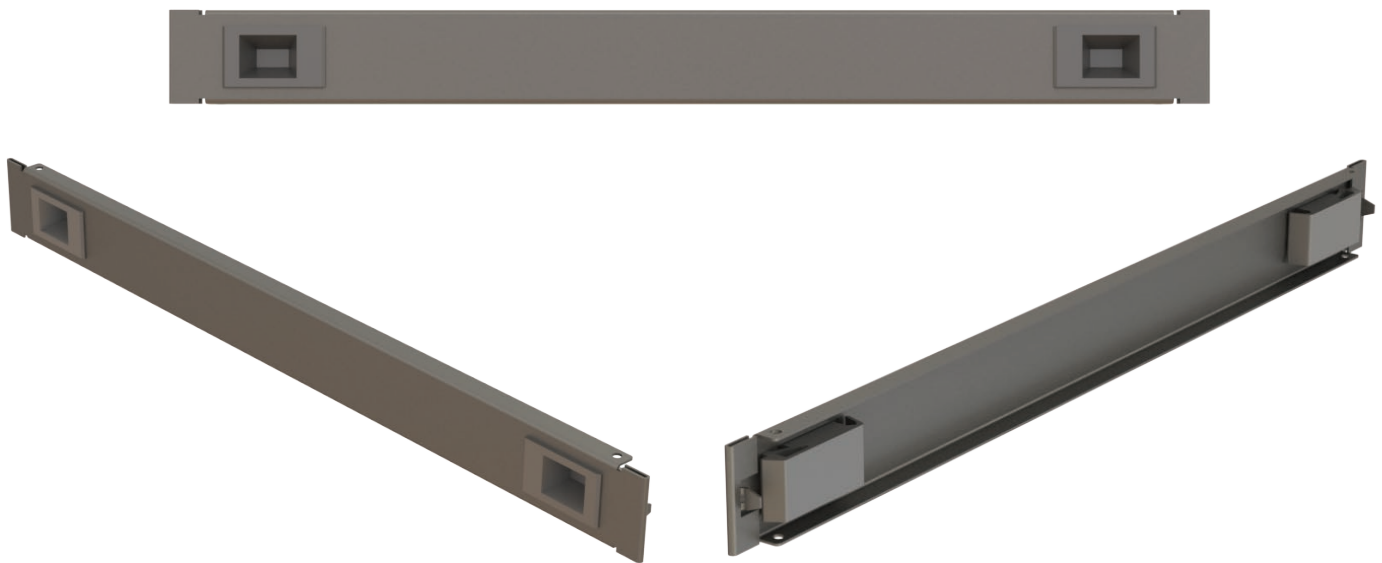


1U 19" Tool-less Latch Snap-in Blanking Panel (Metal)

Blanking panels are part of the energy-saving airflow management solutions for smart data centers. They are designed to minimize bypass airflow in racks and cabinets while providing a desirable appearance. This panel has a latch on each side to provide a more secure lock in position, and it cannot be removed without unhooking the latches sideways.

Characteristics

- Steel material, Epoxy Powder Coated Paint (RAL 9005)
- 19" Blanking panels are suitable for all type of 19" racks
- Quick installation with tool-less design
- Snap-in latches provide easy installation and removal
- RoHS Compliant



Ordering Information

Product Code	Description
MT09615	19" 1U Blanking Panel Tool-less Latch Snap-in_Black (1 Pc/Pack)

Dimensions and Drawing

