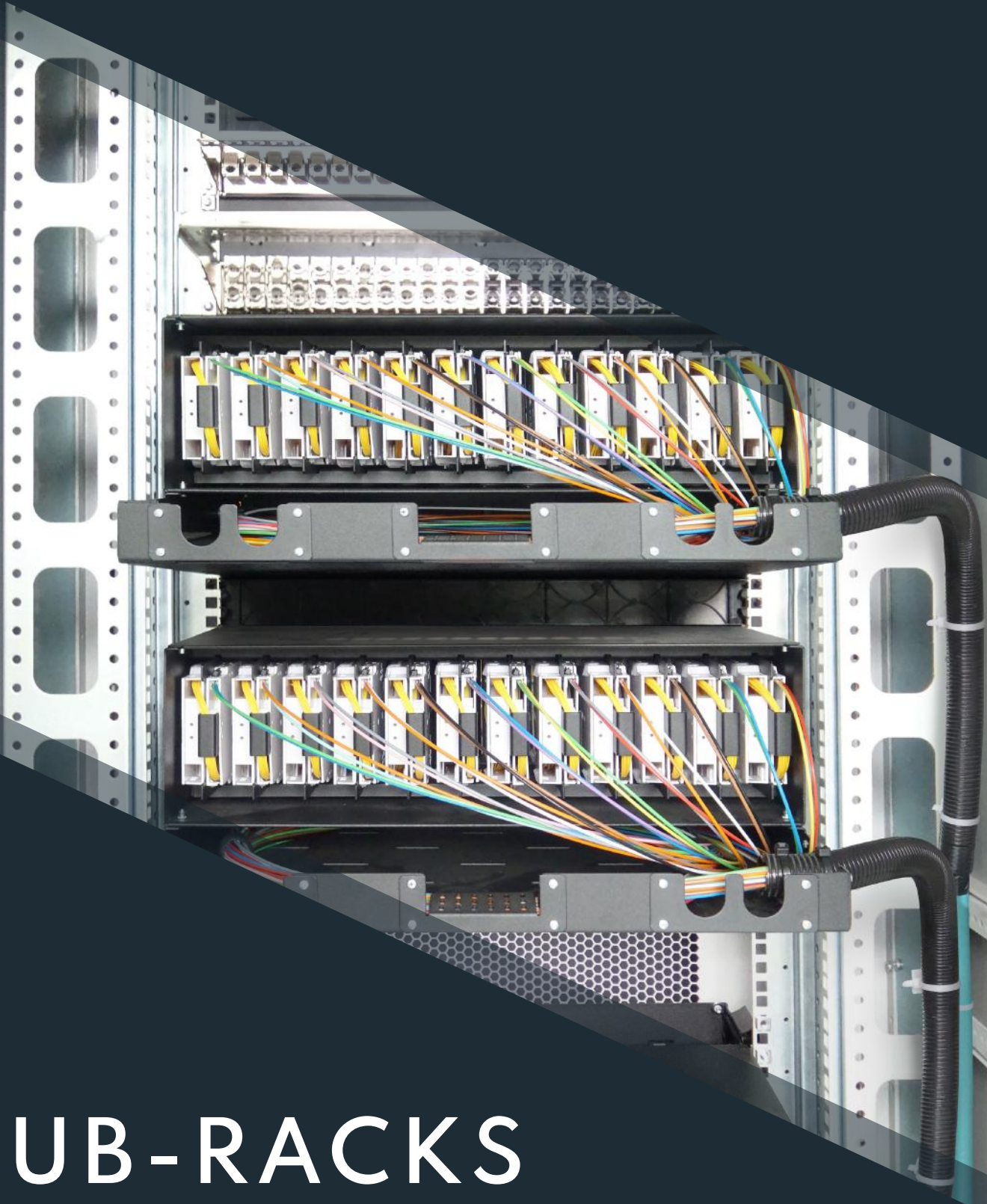




Same Products
Online

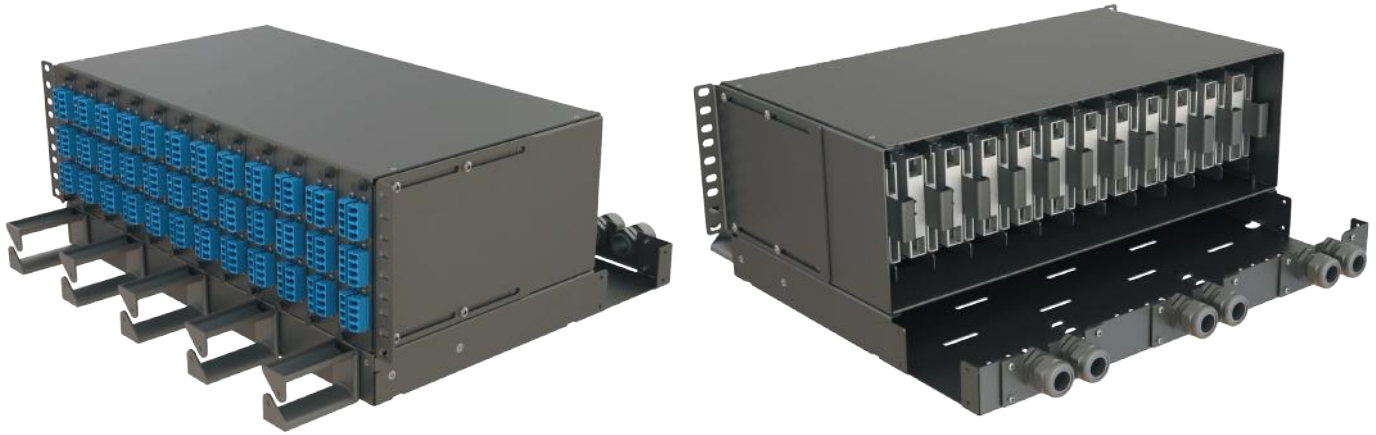
DATA CENTER SOLUTIONS



SUB-RACKS

3U Sub-racks | up to 12 Modules | Front Access

3U Modular sub-racks can house up to 12 compact modules with a capacity of up to 288 LC and 144 SC ports. This solution is designed for splicing, patching and MTP-LC conversion applications in high-density environments where front access is desired, especially on the carrier and transmission side.



Features

- Standard 3U/4U - 19" size
- Can accommodate up to 12 plug-in modules
- Can be used with various connector types: ST, SC, FC, LC, LSH (E2000)
- Modular structure with plug-in splice, patch and MTP/LC conversion modules
- Lightweight aluminium/sheet steel construction
- Easy and time-saving installation
- Various type of rear and side cable entry options
- Powder-coated RAL 9000 (Black)
- Operating temperature: -20°C / +80°C

Compliance/Certifications

- ISO 9001:2015 Designed, manufactured and/or distributed under this quality management system
- Flammability rating UL94 V-0
- 100% Compatible to Bellcore GR-326 standards
- ROHS Compliant



SUBRACK3U-12M-BLK-NN

3U Sub-rack, front access, up to 12 module capacity



SUBRACK4U-12M-BLK-NN

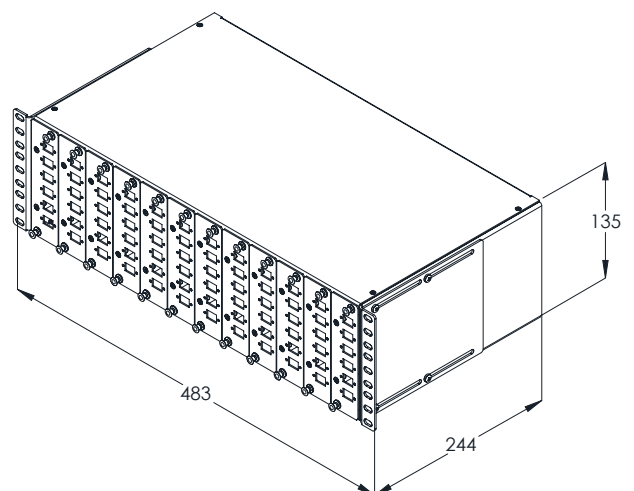
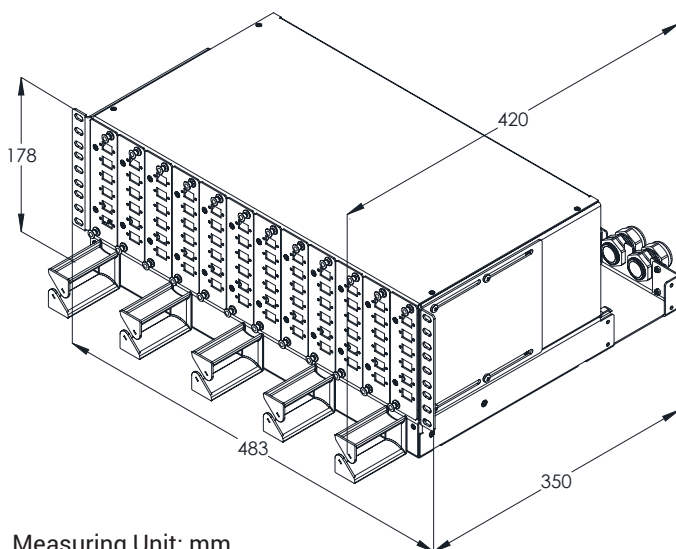
4U Sub-rack, front access, up to 12 module capacity with over-length management shelf

** Optional Rear/Side entry accessories must be ordered separately from the optional accessories table

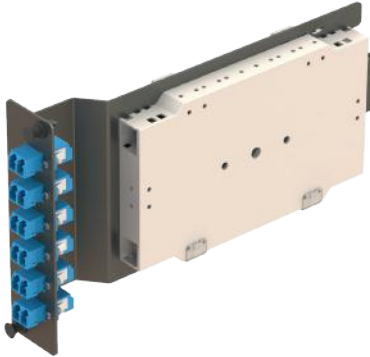
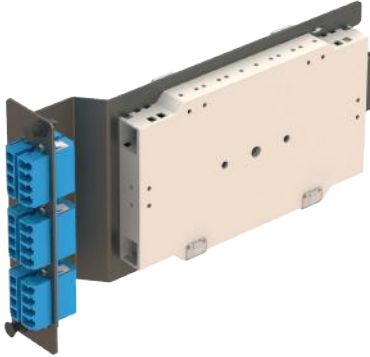
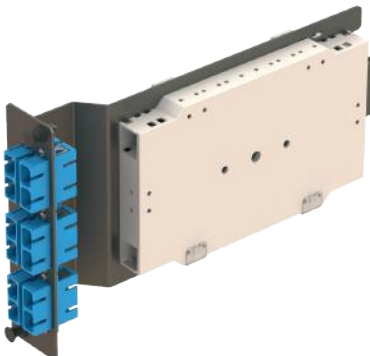
Optional Accessories

Picture	Description	Order Code
	1 PC of 2xPG16 Gland Plate 2 PC of PG16 Gland + Nut	OMS-REP_SET_01
	1 PC of 1xPG16+1xPG13,5 Gland Plate 1 PC of PG16 Gland + Nut 1 PC of PG13,5 Gland + Nut	OMS-REP_SET_02
	1 PC of Cable Tie Up Plate	OMS-REP_SET_03
	1 PC of Fan-out Body Holder Plate	OMS-REP_SET_04
	1 PC of Blind Plate	OMS-REP_SET_05
	Blind Plate for Subrack 3U, Black	BLIND-PLATE-S3U-BLK

Dimensions



Splice Modules

6x LC Duplex Module - 12 Fibers	Code and Description
	SMC3U-SM-LCDX/PC-12-NN 3U compact module, splice to patch, 6 x LC-PC Duplex Adapter, Single Mode, 9/125 μm, SM,12F,w/o pigtail
	SMC3U-SM-LCDX/APC-12-NN 3U compact module, splice to patch, 6 x LC-APC Duplex Adapter, Single Mode, 9/125 μm, SM,12F,w/o pigtail
	SMC3U-M3-LCDX/PC-12-NN 3U compact module, splice to patch, 6 x LC-PC Duplex Adapter, Multi Mode, 50/125 μm, OM3,12F,w/o pigtail
	SMC3U-M4-LCDX/PC-12-NN 3U compact module, splice to patch, 6 x LC-PC Duplex Adapter, Multi Mode, 50/125 μm, OM4,12F,w/o pigtail
6x LC Quad Module - 24 Fibers	Code and Description
	SMC3U-SM-LCQD/PC-24-NN 3U compact module, splice to patch, 6 x LC-PC Quad Adapter, Single Mode, 9/125 μm, SM,24F,w/o pigtail
	SMC3U-SM-LCQD/APC-24-NN 3U compact module, splice to patch, 6 x LC-APC Quad Adapter, Single Mode, 9/125 μm, SM,24F,w/o pigtail
	SMC3U-M3-LCQD/PC-24-NN 3U compact module, splice to patch, 6 x LC-PC Quad Adapter, Multi Mode, 50/125 μm, OM3,24F,w/o pigtail
	SMC3U-M4-LCQD/PC-24-NN 3U compact module, splice to patch, 6 x LC-PC Quad Adapter, Multi Mode, 50/125 μm, OM4,24F,w/o pigtail
6x SC Duplex - 12 Fibers	Code and Description
	SMC3U-SM-SCDX/PC-12-NN 3U compact module, splice to patch, 6 x SC-PC Duplex Adapter, Single Mode, 9/125 μm, SM,12F,w/o pigtail
	SMC3U-SM-SCDX/APC-12-NN 3U compact module, splice to patch, 6 x SC-APC Duplex Adapter, Single Mode, 9/125 μm, SM,12F,w/o pigtail
	SMC3U-M3-SCDX/PC-12-NN 3U compact module, splice to patch, 6 x SC-PC Duplex Adapter, Multi Mode, 50/125 μm, OM3,12F,w/o pigtail
	SMC3U-M4-SCDX/PC-12-NN 3U compact module, splice to patch, 6 x SC-PC Duplex Adapter, Multi Mode, 50/125 μm, OM4,12F,w/o pigtail

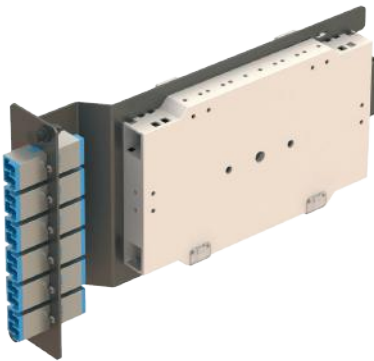

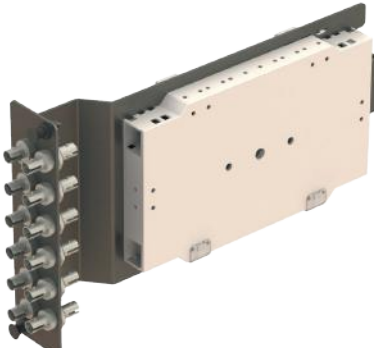
NN Coding Note:

Pigtails must be ordered separately. If pigtails are requested as pre-assembled on the modules , please indicate NN count on the Item Coding

Pigtail length is 2 meters as standard and tube colors are as follows;

Single Mode A1: White , Single Mode A2: Yellow , Multimode OM2: Orange , Multimode OM3: Aqua , Multimode OM4: Violet

Splice Modules

6x LSH (E2000) Duplex Module - 12 Fibers	Code and Description
	SMC3U-SM-LSH(E2000)DX/PC-12-NN 3U compact module, splice to patch, 6 x LSH(E2000)-PC Duplex Adapter, Single Mode, 9/125 μm, SM,12F,w/o pigtail
	SMC3U-SM-LSH(E2000)DX/APC-12-NN 3U compact module, splice to patch, 6 x S LSH(E2000)-APC Duplex Adapter, Single Mode, 9/125 μm, SM,12F,w/o pigtail
	SMC3U-M3-LSH(E2000)DX/PC-12-NN 3U compact module, splice to patch, 6 x LSH(E2000)-PC Duplex Adapter, Multi Mode, 50/125 μm, OM3,12F,w/o pigtail
	SMC3U-M4-LSH(E2000)DX/PC-12-NN 3U compact module, splice to patch, 6 x LSH(E2000)-PC Duplex Adapter, Multi Mode, 50/125 μm, OM4,12F,w/o pigtail
12x FC Simplex Module - 12 Fibers	Code and Description
	SMC3U-SM-FCSX/PC-12-NN 3U compact module, splice to patch, 12 x FC-PC Simplex Adapter, Single Mode, 9/125 μm, SM,12F,w/o pigtail
	SMC3U-SM-FCSX/APC-12-NN 3U compact module, splice to patch, 12 x FC-APC Simplex Adapter, Single Mode, 9/125 μm, SM,12F,w/o pigtail
	SMC3U-M3-FCSX/PC-12-NN 3U compact module, splice to patch, 12 x FC-PC Simplex Adapter, Multi Mode, 50/125 μm, OM3,12F,w/o pigtail
	SMC3U-M4-FCSX/PC-12-NN 3U compact module, splice to patch, 12 x FC-PC Simplex Adapter, Multi Mode, 50/125 μm, OM4,12F,w/o pigtail
12x ST Simplex Module - 12 Fibers	Code and Description
	SMC3U-SM-STSX/PC-12-NN 3U compact module, splice to patch, 12 x ST-PC Simplex Adapter, Single Mode, 9/125 μm, SM,12F,w/o pigtail
	SMC3U-M3-STSX/PC-12-NN 3U compact module, splice to patch, 12 x ST-PC Simplex Adapter, Multi Mode, 50/125 μm, OM3,12F,w/o pigtail
	SMC3U-M4-STSX/PC-12-NN 3U compact module, splice to patch, 12 x ST-PC Simplex Adapter, Multi Mode, 50/125 μm, OM4,12F,w/o pigtail


NN Coding Note:


Pigtails must be ordered separately. If pigtails are requested as pre-assembled on the modules , please indicate NN count on the Item Coding


Pigtail length is 2 meters as standard and tube colors are as follows;

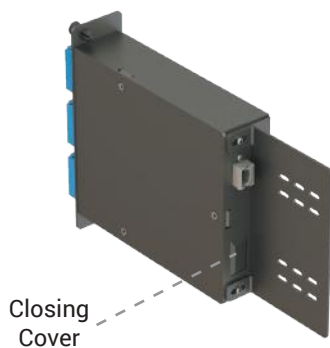
Single Mode A1: White , Single Mode A2: Yellow , Multimode OM2: Orange , Multimode OM3: Aqua , Multimode OM4: Violet

MTP to LC Transition Modules

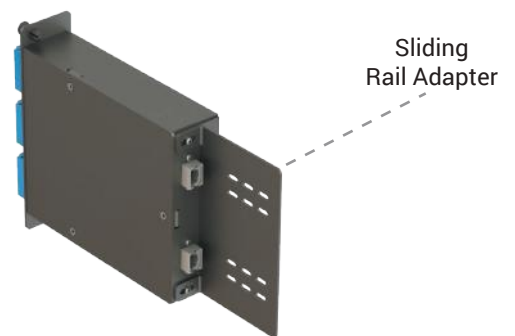
Base-12_1x12MTP to 6xLC Duplex	Code and Description
	TMC3U-12F-1xMTP12m-A2-06LCDX-B 3U compact module, MTP to LC, Rear 1x MTP12male, Front 6 x LC-PC Duplex Adapter, Single Mode, 9/125 μm, A2,12F, Type B
	TMC3U-12F-1xMTP12m-M3-06LCDX-B 3U compact module, MTP to LC, Rear 1x MTP212 male, Front 6 x LC-PC Duplex Adapter, Multi Mode, 50/125 μm, OM3,24F, Type B
	TMC3U-12F-1xMTP12m-M4-06LCDX-B 3U compact module, MTP to LC, Rear 1x MTP12 male, Front 6 x LC-PC Duplex Adapter, Multi Mode, 50/125 μm, OM3,24F, Type B

Base-12_2x12MTP to 6xLC Quad	Code and Description
	TMC3U-24F-2xMTP12m-A2-06LCQD-B 3U compact module, MTP to LC, Rear 2x MTP12 male, Front 6 x LC-PC Quad Adapter, Single Mode, 9/125 μm, A2,24F, Type B
	TMC3U-24F-2xMTP12m-M3-06LCQD-B 3U compact module, MTP to LC, Rear 2x MTP12 male, Front 6 x LC-PC Quad Adapter, Multi Mode, 50/125 μm, OM3,24F, Type B
	TMC3U-24F-2xMTP12m-M4-06LCQD-B 3U compact module, MTP to LC, Rear 2x MTP12 male, Front 6 x LC-PC Quad Adapter, Multi Mode, 50/125 μm, OM3,24F, Type B

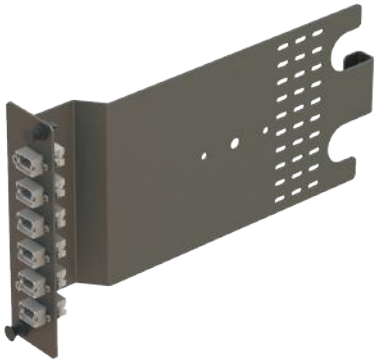
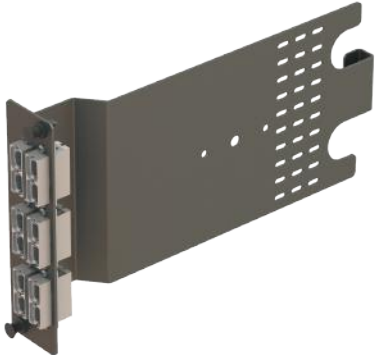
Base-24_1x24MTP to 6xLC Quad	Code and Description
	TMC3U-24F-1xMTP24m-A2-06LCQD-B 3U compact module, MTP to LC, Rear 1x MTP24 male, Front 6 x LC-PC Quad Adapter, Single Mode, 9/125 μm, A2,24F, Type B
	TMC3U-24F-1xMTP24m-M3-06LCQD-B 3U compact module, MTP to LC, Rear 1x MTP24 male, Front 6 x LC-PC Quad Adapter, Multi Mode, 50/125 μm, OM3,24F, Type B
	TMC3U-24F-2xMTP24m-M4-06LCQD-B 3U compact module, MTP to LC, Rear 1x MTP24 male, Front 6 x LC-PC Quad Adapter, Multi Mode, 50/125 μm, OM3,24F, Type B



Module Back Side



MTP Patch Modules

6xMTP Simplex Patch Module	Code and Description
	<p>PMC3U-06MTP_SX-Type A 3U compact module, patch to patch, 6 x Simplex MTP Adapter, Black, Key-Up/Key-Down, Type A</p>
	<p>PMC3U-06MTP_SX-Type B 3U compact module, patch to patch, 6 x Simplex MTP Adapter, Beige, Key-Up/Key-Up, Type B</p>
6xMTP Duplex Patch Module	Code and Description
	<p>PMC3U-12MTP_DX-Type A 3U compact module, patch to patch, 6 x Duplex MTP Adapter, Black, Key-Up/Key-Down, Type A</p>
	<p>PMC3U-12MTP_DX-Type B 3U compact module, patch to patch, 6 x Duplex MTP Adapter, Beige, Key-Up/Key-Up, Type B</p>

Front Plates Fiber/Port Identification

