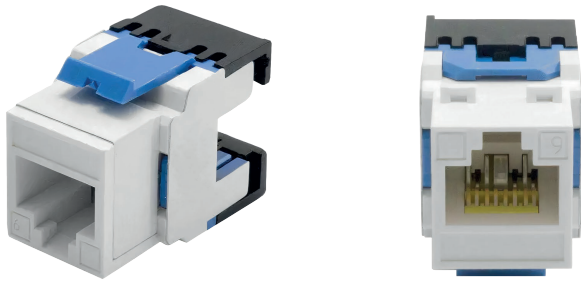


Component Rated CAT6 UTP Keystone Jack 180° | Unshielded

Component Rated Cat6 level 180° UTP punch-down keystone jack is designed to easily snap in and out of the wall outlets, patch panels and surface mount boxes. CAT6 jacks are designed in a 180° orientation and are available with back interconnection of IDC blocks in universal pin/pair assignment. The Cat 6 keystone module supports transmission performance of edition 2.2 of ISO/IEC 11801, CENELEC 50173-1, and ANSI-TIA-568.2-D for Return loss, Insertion loss, NEXT loss, FEXT loss, TCL, TCTL, PSANEXT loss, and PSAFEXT loss up to 250 MHz. This RJ45 female keystone jack is T568A and T568B wiring color coded that supports 23 to 26 AWG solid or stranded Ethernet cables.

Order Code

YT01922 KJ-RJ45F-RJ45F-C06-US-180-CR



Termination Tool

MT13228 KJ-TOOL-180-YT01644

Features and Benefits

- The unique structure provides an efficient and effective method of reducing alien cross-talk from neighboring connectors
- Compatible with both 110 & LSA crimping tools
- 50u" Gold plated Nickel at contact points
- Higher data bandwidth for up to 350MHz
- Integrated Color coding according to EIA/TIA 568 A & B
- Designed for Improved return and NEXT loss

Compliance and Certifications

- Transmission Performance, ISO-11801 & TIA-568.2-D Cat 6 Connecting Hardware Certified
- FCC & IEC Compliance , Meets FCC part 68-F & IEC60603-7
- PoE Compliance, Supports Power over Ethernet PoE+ 802.3at and PoE++ 802.3bt
- Ethernet Standard, IEEE 802.3ab 1000Base-T Gbit/s Ethernet over Twisted Pair
- Flammability rating, UL94 V-0,
- RoHS Compliant , EU Directive 2002/95/EC

Packaging

50 pcs.



Dimensions

