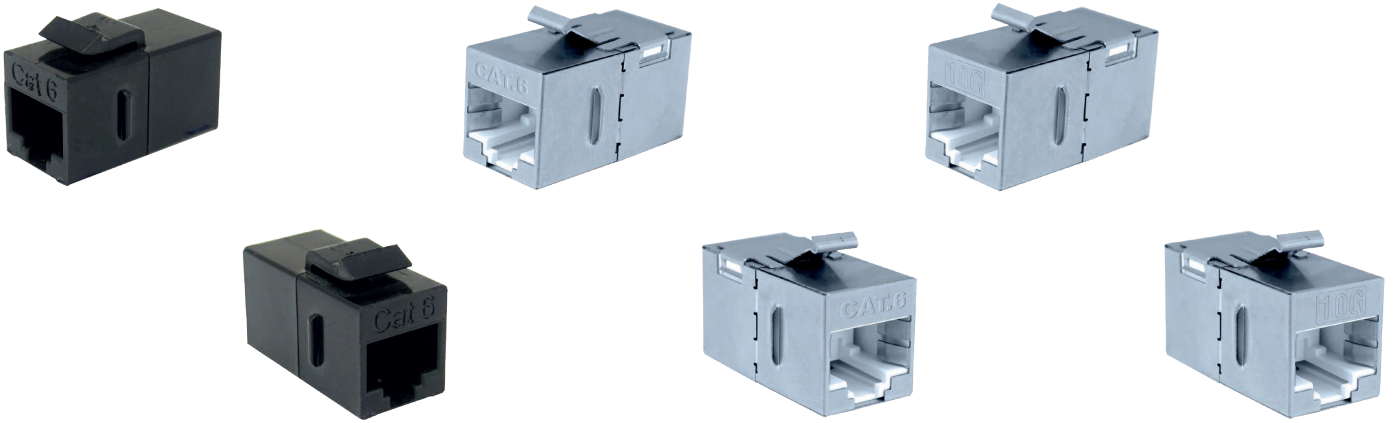


## 180° Inline Couplers | Tool-less

Product Code	Product Description
RJ45F-RJ45F-C06-UTP-180_Inline	Cat6 UTP 180 Degree Inline Coupler - Black Color
RJ45F-RJ45F-C06-FTP-180_Inline	Cat6 FTP 180 Degree Inline Coupler
RJ45F-RJ45F-C6A-FTP-180_Inline	Cat6A FTP 180 Degree Inline Coupler



### Features

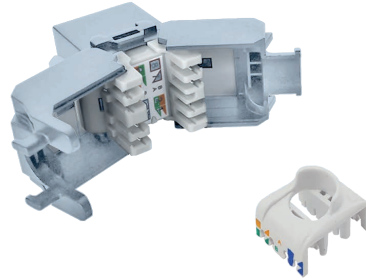
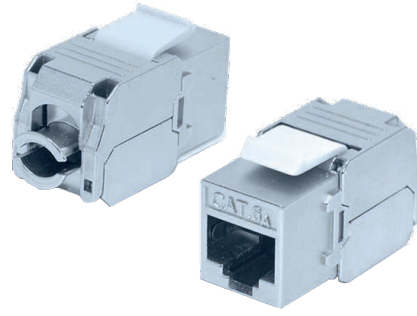
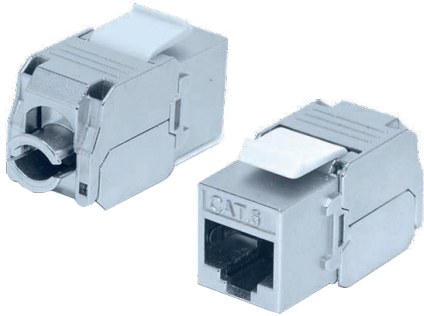
- The most cost effective way to link several networking cables
- Connect two computers together without using a hub
- Compact design, could be snapped into a blank patch panel to work as an interconnect feed-through
- Slim and compact
- It can be used in different conditions and transmission compliance remains
- It features press-fit technology, which is lead-free and no solder

### Performance

Insertion Life	750 mating cycles with FCC compliant RJ-45 Plug
Contact Force	100 grams with FCC compliant RJ-45 Plug
Plug Retention Force	11 LBF MIN
Operating Temperature Range	-10°C To 60°C
Storage Temperature Range	-40°C To 68°C
Humidity	10% ~ 90%RH

## 90° Keystone Jacks | Shielded | Tool-less

Product Code	Product Description
RJ45F-RJ45F-C06-FS-180	Category 6 Jack to Jack Keystone   Shielded
RJ45F-RJ45F-C6A-FS-180	Category 6A Jack to Jack Keystone   Shielded



### Features

- Compatible both T568A and T568B wiring schemes.
- Full shielded by zinc alloy housing
- DELTA and ETL verified CAT6 and CAT6A component-rated performance
- UL safety listed
- Tool-less type, easy installation.
- Copper wire gauge: 23AWG to 26AWG
- Cable outer diameter: 5.0 to 8.0mm
- Easily snap in and out of patch panel, and surface boxes or other application.
- UL Certified & RoHS Compliant.
- PoE plus IEC60512-99-001 verified by DELTA
- L x W x H: 37.8 x 16.8 x 22.7mm

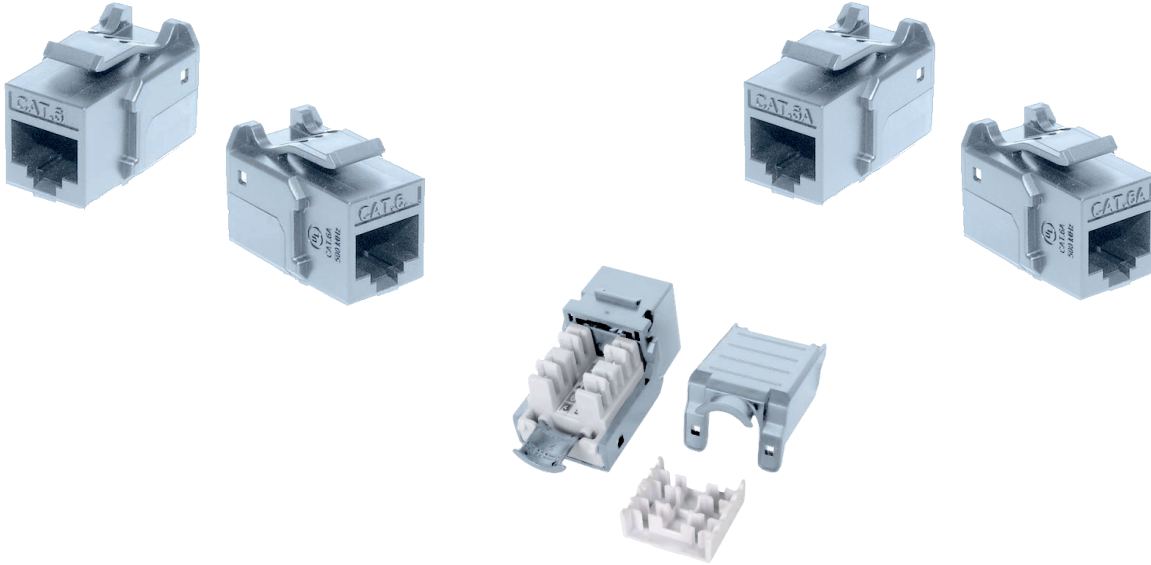
### Easy Crimp Tool - 1

- Suitable for RJ45F-RJ45F-C06-FS-180
- Suitable for RJ45F-RJ45F-C6A-FS-180
- Light weight by plastic material design
- Economic solution for keystone jack and field termination plug installation



## 90° Keystone Jacks | Shielded Tool-less

Product Code	Product Description
RJ45F-RJ45F-C06-FS-90	Category 6 Jack to Jack Keystone   Shielded
RJ45F-RJ45F-C6A-FS-90	Category 6A Jack to Jack Keystone   Shielded



### Features

- Compatible both T568A and T568B wiring schemes.
- Full shielded by zinc alloy housing
- DELTA and ETL verified CAT6 and CAT6A component-rated performance
- UL safety listed
- Tool-less type, easy installation.
- Copper wire gauge: 23AWG to 26AWG
- Cable outer diameter: 5.0 to 8.0mm
- Easily snap in and out of patch panel, and surface boxes or other application.
- UL Certified & RoHS Compliant.
- PoE plus IEC60512-99-001 verified by DELTA
- L x W x H: 37.8 x 16.8 x 22.7mm

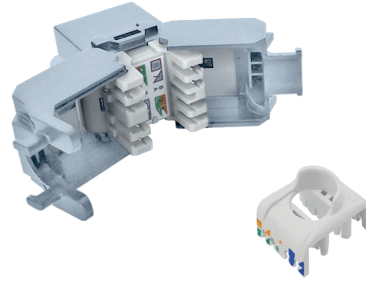
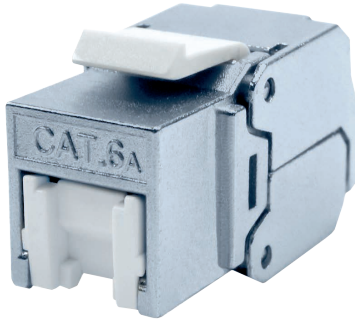
### Easy Crimp Tool - 2

- Suitable for RJ45F-RJ45F-C06-FS-90
- Suitable for RJ45F-RJ45F-C6A-FS-90
- Light weight by plastic material design
- Economic solution for keystone jack and field termination plug installation



## 180° Keystone Jacks | Shielded | Tool-less

Product Code	Product Description
RJ45F-RJ45F-C06-FS-180-DC	Category 6 Jack to Jack Keystone   Shielded
RJ45F-RJ45F-C6A-FS-180-DC	Category 6A Jack to Jack Keystone   Shielded



### Features

- Compatible both T568A and T568B wiring schemes.
- Full shielded by zinc alloy housing
- DELTA and ETL verified CAT6 and CAT6A component-rated performance
- UL safety listed
- Tool-less type, easy installation.
- Copper wire gauge: 23AWG to 26AWG
- Cable outer diameter: 5.0 to 8.0mm
- Easily snap in and out of patch panel, and surface boxes or other application.
- UL Certified & RoHS Compliant.
- PoE plus IEC60512-99-001 verified by DELTA
- L x W x H: 37.8 x 16.8 x 22.7mm

### Easy Crimp Tool - 2

- Suitable for RJ45F-RJ45F-C06-FS-90
- Suitable for RJ45F-RJ45F-C6A-FS-90
- Light weight by plastic material design
- Economic solution for keystone jack and field termination plug installation

