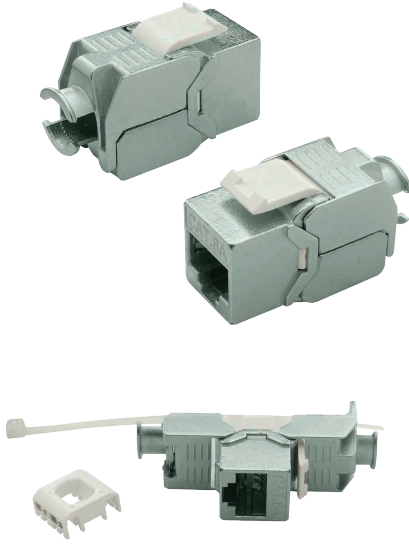


CAT6A Jack to Jack Keystone 180°, Shielded / Unshielded

The 180° CAT6A jack to jack keystones, also known as a "Female RJ45 Connector", is used to terminate 23-24 AWG cables and can be installed easily without the need for tools. This 180° CAT6A keystone jack comes in two versions: shielded and unshielded. The cable terminated with jack keystones can be mounted into copper network patch panels easily.

Shielded Keystone



Unshielded Keystone



Features

- Compatible both T568A and T568B wiring schemes.
- Full shielded by zinc alloy housing
- ETL verified and RoHS Compliant.
- Tool-less type, easy installation.
- Copper wire gauge: 22AWG to 26AWG
- Cable outer diameter: 5.0 to 8.0mm
- Easily snap in and out of patch panel, and surface boxes or other application.

Ordering Codes

Product Code	Product Description	Web Code
KJ-RJ45F-RJ45F-C6A-FS-180	FTP Cat6A Keystone Jack, 180 Degree	YT01193
KJ-RJ45F-RJ45F-C6A-US-180	UTP Cat6A Keystone Jack, 180 Degree, Black/White	YT01525

Packaging



Dimensions

