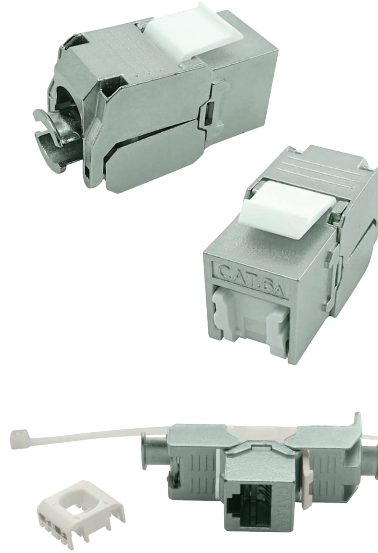


CAT6A Jack to Jack Keystone 180° with Dust Cover, Shielded

The 180° CAT6A jack to jack keystones, also known as a "Female RJ45 Connector", is used to terminate 23-24 AWG cables and can be installed easily without the need for tools. This 180° CAT6A keystone jack comes with a dust cover to keep it clean from debris when it is not plugged. The cable terminated with jack keystones can be mounted into copper network patch panels easily.

Shielded Keystone w/ Dust Cover



Features

- Compatible both T568A and T568B wiring schemes.
- Full shielded by zinc alloy housing with dust cover
- ETL verified and RoHS Compliant.
- Tool-less type, easy installation.
- Copper wire gauge: 22AWG to 26AWG
- Cable outer diameter: 5.0 to 8.0mm
- Easily snap in and out of patch panel, and surface boxes or other application.
- Adapted dust cover structure.

Ordering Codes

Product Code	Product Description	Web Code
KJ-RJ45F-RJ45F-C6A-FS-180-WD	FTP Cat6A Keystone Jack, 180 Degree, with Dust Cover	

Packaging



Dimensions

