

DIN Rail Copper Termination Module

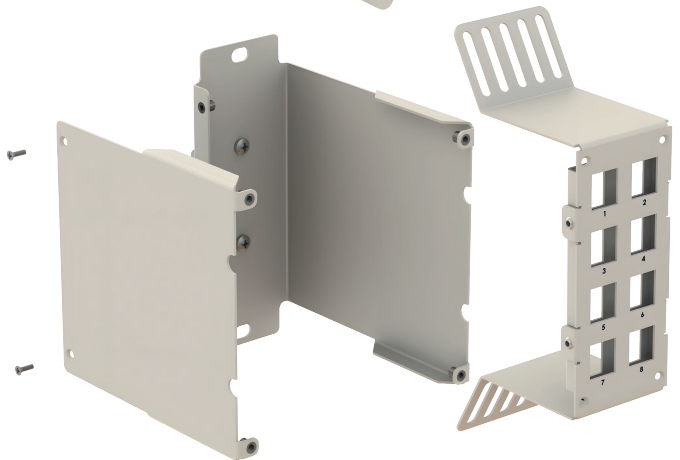
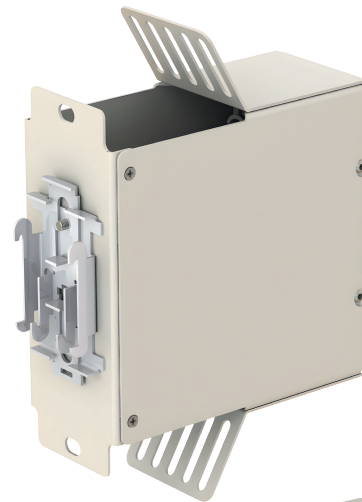
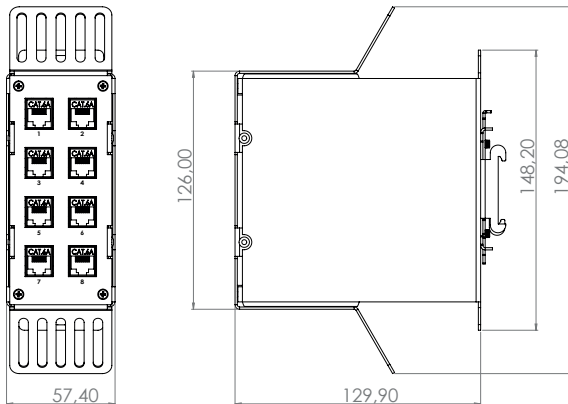
FDF-DIN-8P-KJRJ45

8-port DIN Rail Fiber Optic Patch Panel provides fiber protection for terminated distribution style cabling. These boxes are ideal for network patching solution in industrial automation and control panels. It can be mounted to a standard 35mm DIN rail and locked in place with adjustable latches. It is compatible with RJ45 keystone jack, shielded and unshielded.

Properties

- Compact product that allows better utilization and organization of cabling installed in industrial cabinets
- Allows installation on DIN rail
- Allows installation on smooth surfaces through fastening with screws
- It provides distribution of up to 8 structured cabling points occupying much less DIN rail space
- Compatible with all Keystone Jacks
- It has ground system integrated to the product
- It guarantees flexibility in the installation because it allows the entry and exit of cables by the top or bottom
- Easy installation and maintenance as it allows the entire front to be removed without loosening the cables.

Dimensions



Order Coding

FDF-DIN-8P-KJRJ45-EMPTY

FDF-DIN-8P-KJRJ45-8xYT01193-LOADED

FDF-DIN-8P-KJRJ45-8xYT01920-LOADED

FDF-DIN-8P-KJRJ45-8xYT01525-LOADED

Dimensions and References

188(H)mm × 140(W)mm × 57(D)mm

Tool-less Key Stones Jacks;

YT01193 KJ-RJ45F-RJ45F-C6A-FS-180 (FTP w/o Dust Cover)

YT01920 KJ-RJ45F-RJ45F-C6A-FS-180-WD (FTP w/ Dust Cover)

YT01525 KJ-RJ45F-RJ45F-C6A-US-180 (UTP Black/White)