

Pre-Terminated 6x Trunk Copper Cables | CAT6A SFTP

Pre-Terminated copper trunk assemblies are designed to improve efficiency and reduce labor cost and waste, especially in large infrastructures with high-density cross-connection and patching systems. Based on the highest performing cabling systems available, supporting 10 Gigabit speeds. Six loose jack module or plug modules on both ends of assembly for simple plug and play installation. Ideal for data centers and other areas where quick installation and consistent network connection are important.

Compliant Standards

ANSI TIA/EIA 568.2-D
ISO/IEC 11801 2nd ed., IEC 61156-5
EN 50173-1, EN 50288-5-1

Applications

IEEE 802.3: 10Base-T; 100Base-T; 1000Base-T; 10GBase-T
IEEE 802.5 16 MB; ISDN; TPDDI; ATM
Power over Ethernet (PoE) / PoE+

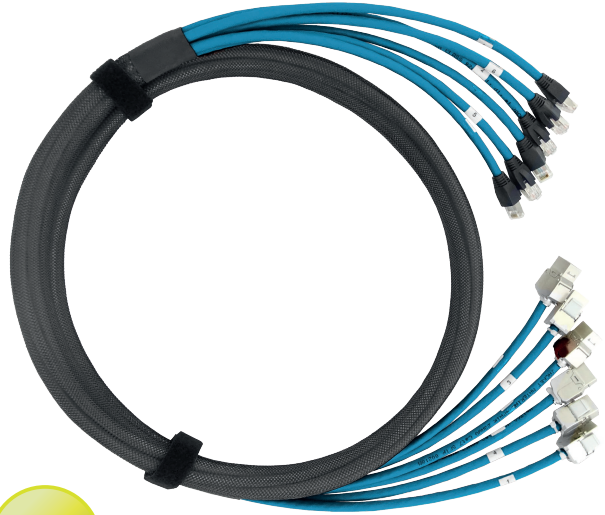
EU Declaration

LVD:	Low Voltage Directive	2014/35/EU
RoHS:	Restriction of Hazardous Substances Directive	2011/65/EU
CPR:	Cca - s1a, d1, a1	EN 13501-6:2018



Features

Quality assurance (pre-terminated and 100% tested)
Private ID serial number is on each trunk cable
Both plug and jack terminations are available
HFFR braided mesh sleeve for easy application
Breakout length is 0.4 m (standard)



Order Codes

6xRJ45F-6xRJ45F-C6A-SFTP-BU-XXM

Cat6A S/FTP 6xFemale-Female Trunk Cable, xx Meter

6xRJ45M-6xRJ45F-C6A-SFTP-BU-XXM

Cat6A S/FTP 6xMale-Female Trunk Cable, xx Meter

6xRJ45M-6xRJ45M-C6A-SFTP-BU-XXM

Cat6A S/FTP 6xMale-Male Trunk Cable, xx Meter



Cable Construction

Conductor	Bare copper wire 23 AWG
Insulation	Polyolefin
Outer cable diameter	7.4 mm
App. Cable Weight	55 kg/km
Sheath	LSZH - Low Smoke Zero Halogen
Color (standard)	Blue RAL 5015