

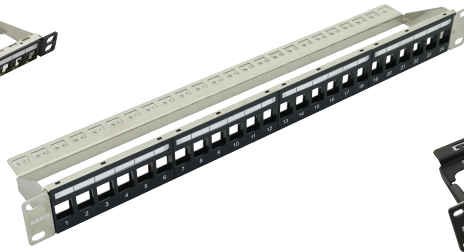
Modular Copper Network Panels

19" rack type copper patch panels with 24 or 48 RJ45 ports, angled or straight front plates, and 1U or 0.5U height. These copper patch panels are compatible with CAT6 and CAT6A keystone jacks.

Straight Panels



UHD ½U - 24 Ports



HD 1U - 24 Ports



UHD 1U - 48 Ports

Angled Panels



HD 1U - 24 Ports



UHD 1U - 48 Ports

Features

- Multiple Options: 1U with 24 or 48 ports, ½U with 24 ports
- Good for Cat5e, Cat6 and Cat6A keystone jacks or couplers
- Labels and inlaid marks, for the cable identification
- Snap-in structure, easy to install and unload the module
- Front panel labelling possible
- Supplied with earthing kit and rear management bar
- High density connectivity that fits into cabinets and racks
- 19 inch Size, FTP, Shielded, 90°
- Snap in panel cable organizer for cable management