

Selecting The Ducting Channel Size

Fiber raceway systems are available in three sizes. It's crucial to choose a size that accommodates future expansion and additions to the ducting system. Too often, cable systems are undersized in an attempt to reduce installation costs. However, in today's data-driven world, this approach is a false economy. It is far more cost-effective in the long run to plan for future growth and over-specify capacity, rather than just meeting current needs.

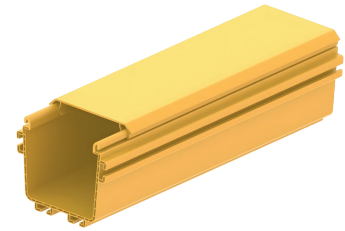
Duct Size (Metric/Inch)	100x100mm / 4x4"		200x100mm / 8x4"		300x100mm / 12x4"	
	Capacity(ea)	Weight(kg)	Capacity(ea)	Weight(kg)	Capacity(ea)	Weight(kg)
Patch cord/3.0mm (%100)	1065	15.91	2100	31.37	3128	46.73
Patch cord/3.0mm (%70)	743	11.10	1477	22.07	2206	32.96
Patch cord/3.0mm (%50)	534	7.98	1068	15.96	1598	23.87
Patch cord/2.0mm (%100)	2491	18.38	4996	36.87	7292	53.81
Patch cord/2.0mm (%70)	1733	12.79	3435	25.35	5135	37.90
Patch cord/2.0mm (%50)	1207	8.91	2409	17.78	3609	26.63
Patch cord/1.6mm (%100)	6393	34.52	7650	41.31	11397	61.54
Patch cord/1.6mm (%70)	5174	27.94	5308	28.66	7930	42.82
Patch cord/1.6mm (%50)	4385	23.68	3769	20.35	5642	30.47

*** The recommended capacities listed above will help prevent cable crushing and resulting damage.

*** Initial fill should be no more than 50% of capacity to accommodate future growth.

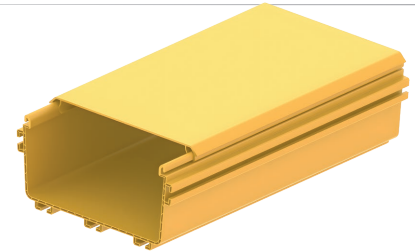
100x100mm (4x4") Channels

Description	Order Code	
	Yellow	Black
FDS_100mm Straight Solid Channel Body_1.8m	ME11001-11	ME11001-12
FDS_100mm Straight Solid Channel Cover_1.8m	ME11001-21	ME11001-22



200x100mm (4x4") Channels

Description	Order Code	
	Yellow	Black
FDS_200mm Straight Solid Channel Body_1.8m	ME12001-11	ME12001-12
FDS_200mm Straight Solid Channel Cover_1.8m	ME12001-21	ME12001-22



300x100mm (4x4") Channels

Description	Order Code	
	Yellow	Black
FDS_300mm Straight Solid Channel Body_1.8m	ME13001-11	ME13001-12
FDS_300mm Straight Solid Channel Cover_1.8m	ME13001-21	ME13001-22

