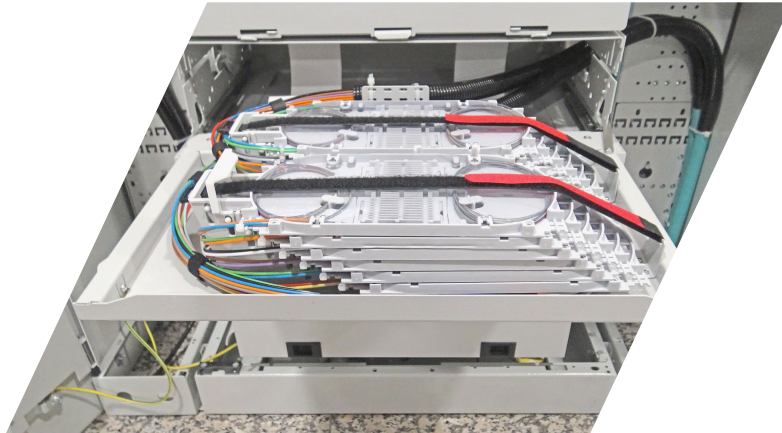




Splicing with Pre-terminated Assemblies



Splicing In-Coming Cables



## FSSH D Fiber Splicing Shelves Installation

### User Guide

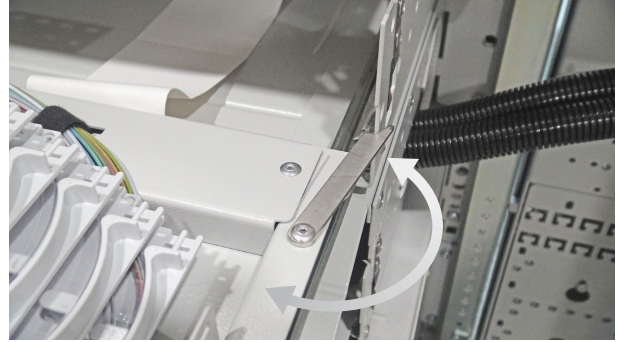


Call Center +90 444 1 726

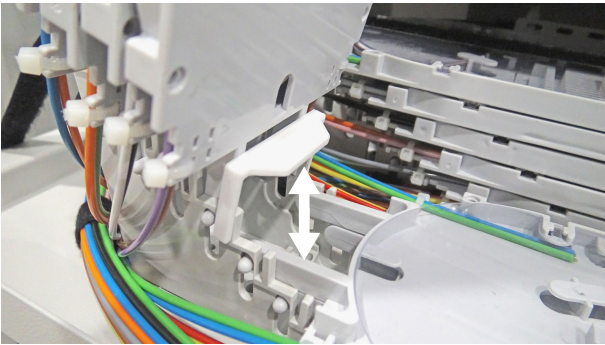
Pull the latch to open the cover. To close push the cover in place, assure that the slide latch is in position.



The drawer can be locked in the fully open position with the pivoting safety lock at the right side.



Trays can be fixed vertically by using tray plastic holders. Place these plastics through the channels on the tray holder.



Push forward to release shelf lock which hold the shelf at secure position.



Align the small knobs with the slots in the side.



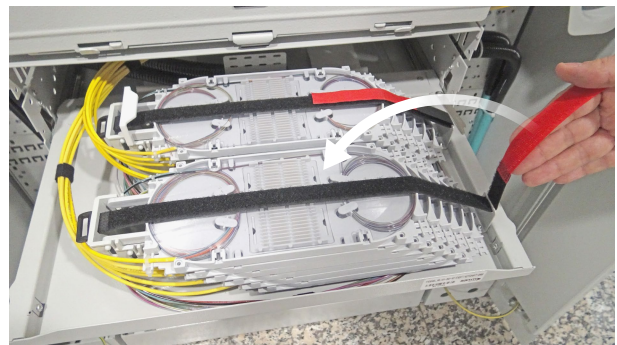
Turn until the locking pins click into both positioning holes.



Fiber ID Card Placement.

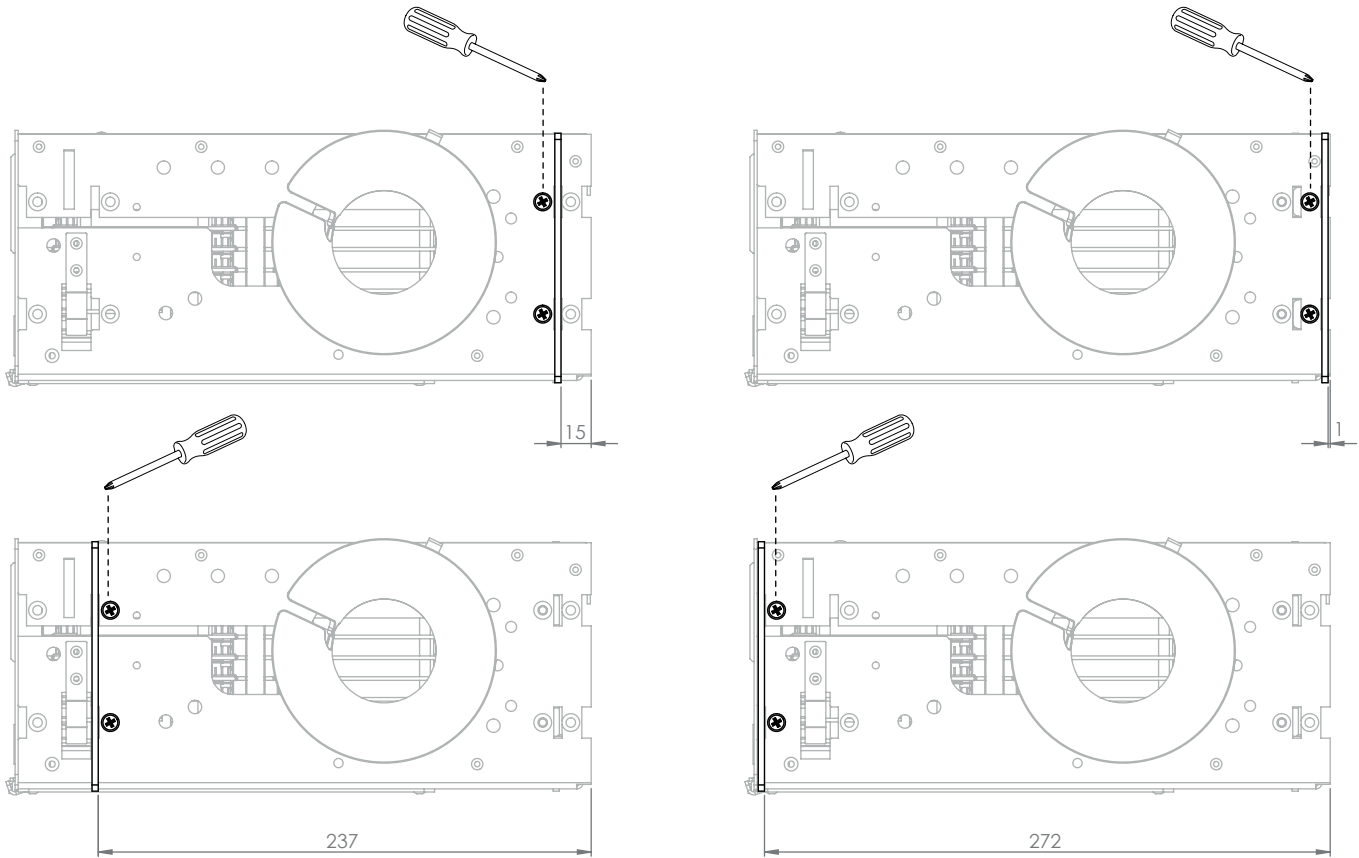


Velcro Tape Strapping.

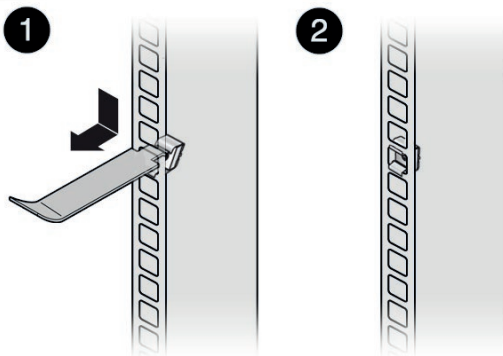


**Positioning and mounting the side brackets :**

Determine the position of the unit and take the unit out the box and mount it into the rack or frame. Depending on rack type, brackets may be positioned for mounting at front, back, for generic racks.



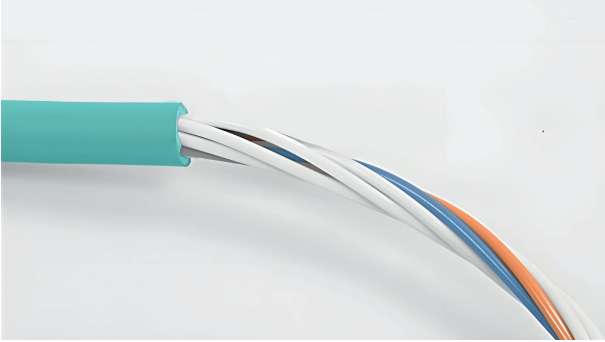
**Installation of the M6 Cage Nuts on the racks.**



**Mounting the shelf on the racks.**



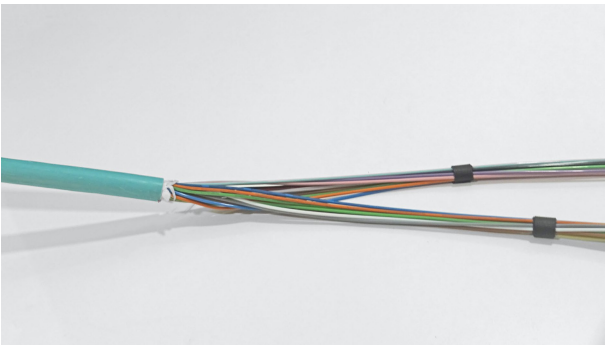
Remove the cable jackets of the cables over approximately 3 meters.



If the forms of the tubes are not straight and twisted for proper installation, please straighten them with a hot air gun .



Wait to strip the loose tube to avoid fiber breakage. Group each of 12 tube to enter on back and front tray modules.



Guide the identified loose tubes into the flex tube (this can be facilitated by keeping the end of the loose tube bundle together with a piece of tape).



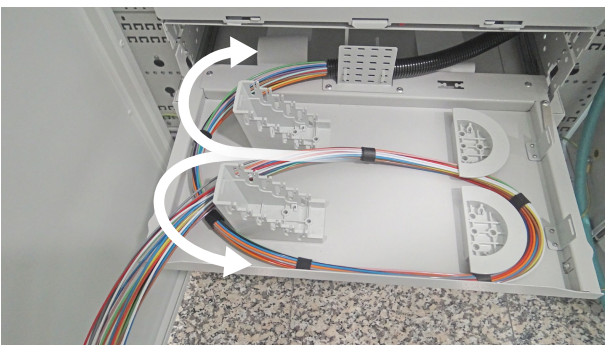
Use a piece of tape to fix cable and flex tube together.



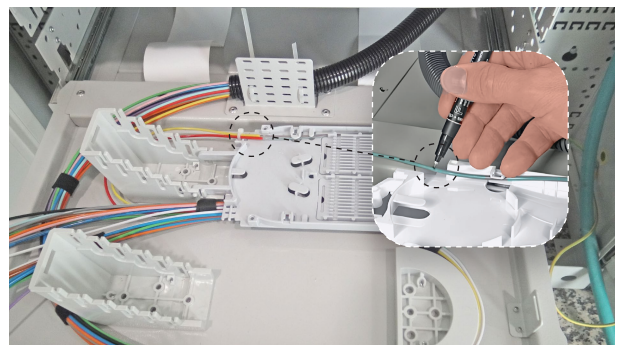
Fix tube flex tube to the shelf on the attachment plate.



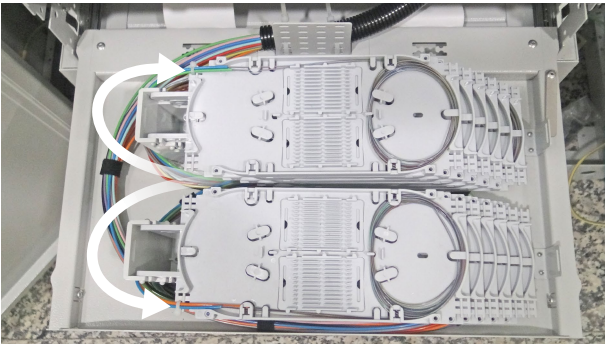
Route all the all the tube as shown on the picture. Then separate them into two groups. Half of the group will be entered on back module trays and half of group will be entered on front module trays.



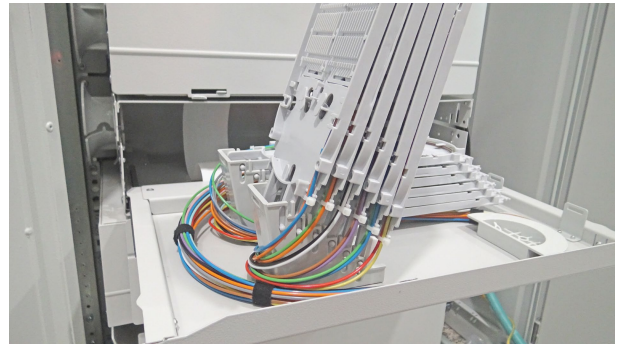
Mark the loose buffer tube for cutting. Now the loose tube can be stripped to expose the bare fibers. Allow at least 100cm fiber length.



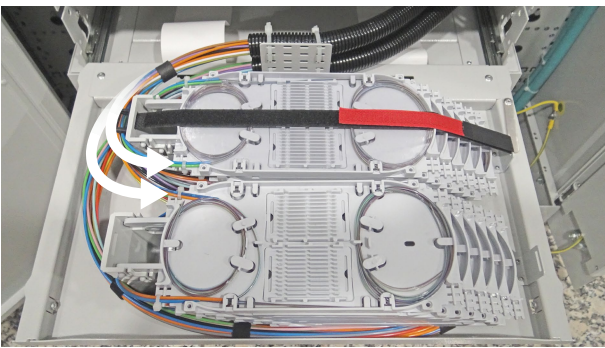
Enter all the tubes on trays just like below directions into two groups.



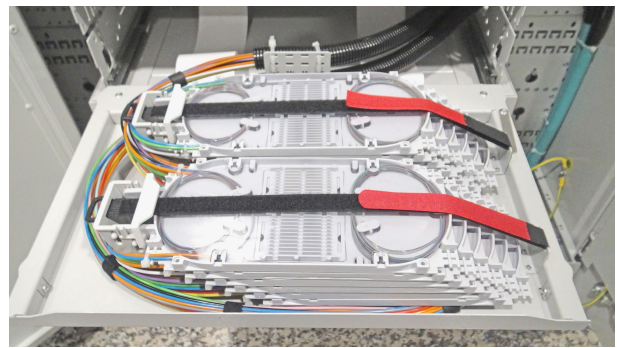
Check functionally if everything is OK.



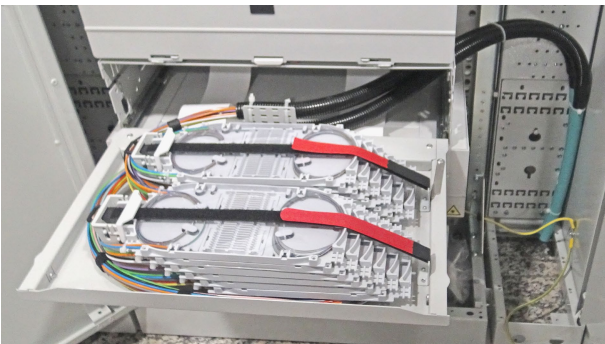
Then enter the Cable2 tubes to the others side of the trays. But this time enter them directly to the trays without buffer storage underneath of the trays.



When all the splices are done , fix the Velcro tapes and tray holders as shown below:



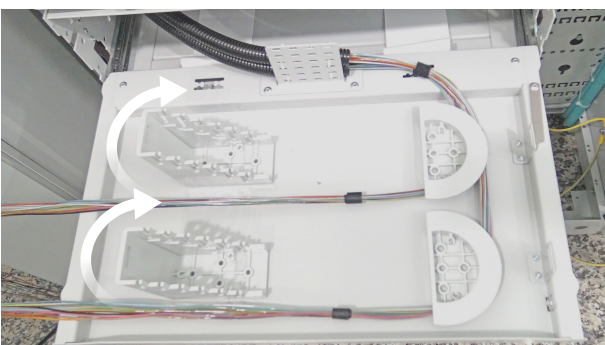
Fix the cable to the cabinet or racks with appropriate fixation accessories or consumables.



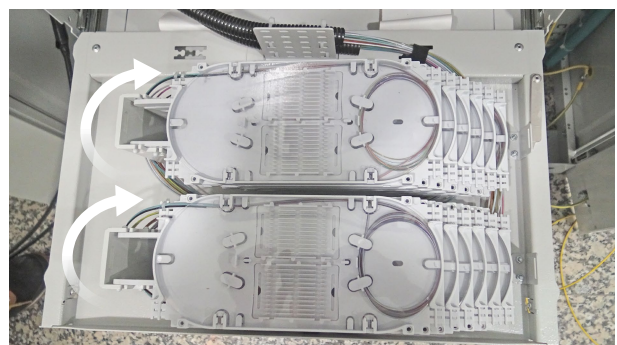
Close the front door when termination is done.



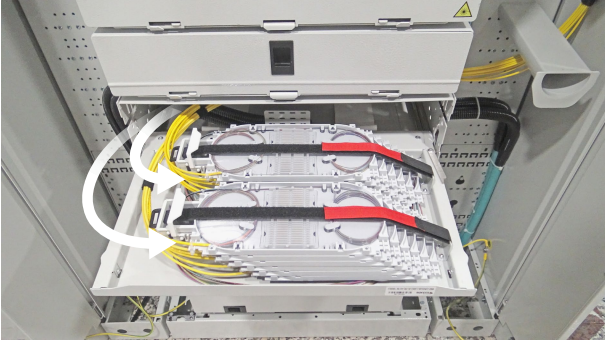
If you terminate pre-terminated assemblies, you may enter the cable from opposite directions.



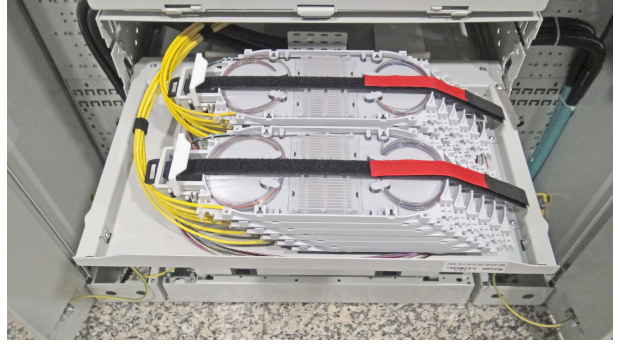
Route the tubes to the trays as shown below. Then enter all the tubes into the trays.



Enter all the pre-terminated cables directly into the trays as shown below:



When all the splices are done, fix the Velcro tapes and tray holders as shown below:





**SAMM Teknoloji**  
İletişim San. ve Tic. A.Ş.

**Website:** [www.samm.com](http://www.samm.com)  
**E-mail:** [info@samm.com](mailto:info@samm.com)

**Tel:** +90 444 17 26  
**Tel:** +90 (262) 677 16 80  
**Fax:** +90 (262) 677 16 81

**Head Office and Gebze Factory Address:**  
Gebze Organize Sanayi Bölgesi (GOSB)  
İhsandede Cd. 800. Sok No: 802  
41400 Gebze - Kocaeli, Türkiye

     /SammTeknoloji